



# the **play inspection** company

---

## Annual Inspection

Long Stratton Town Council

Manor Road Playing Fields

Manor Road, Long Stratton, NR15 2XR



**API** Associate



Unit 5, Glenmore Business Park, Blackhill Road, Poole, Dorset, BH16 6NL  
t- 01202 590675 e- info@playinspections.co.uk

[www. playinspections .co.uk](http://www.playinspections.co.uk)

## Inspection Scope for RPII Inspection Methodology

This document outlines the RPII scope for inspections undertaken by the Inspectors listed as Annual Inspectors on the RPII Register of Inspectors when undertaking Indoor Annual, Outdoor Annual, Outdoor Operational and Outdoor Routine inspections.

Inspections are undertaken with reference to the standards listed in this preamble only; where no date for the standard is given it will be the standard that is current at the time of inspection except where overlap periods are granted by the standards committee when standards are updated. The information contained in reports is provided to assist the owner/operator in fulfilling their responsibilities as detailed in the relevant standard. Other standards referenced within the listed standards do not form part of the inspection, unless they are also explicitly listed here.

The following standards are relevant to all installations of equipment that are publicly accessible to users; this includes public parks, pay and play parks, schools, nurseries, public houses, holiday parks, indoor play centres, farm parks etc. All equipment used or employed in publicly accessible areas should meet with the requirements of the relevant standards (listed below):

BS EN 1176 Parts 1, 2, 3, 4, 5, 6, 10 & 11 Playground equipment intended for permanent installation outdoors & indoors.

BS EN 1176 Part 7 - 'Guidance on Installation, Inspection, Maintenance and Operation' (this document gives guidance to the owners/operators of the facility on the installation, inspection, maintenance and operation of playground equipment, excluding ancillary items).

In the United Kingdom the National Foreword forms an important part to the understanding and implementation of the recommendations set out in this document. It clarifies the application of the document within the UK as best practice guidance, as the document has been used since its initial publication. Therefore, in the UK this standard (BS EN 1176 – Part 7) contains no requirements and needs to be read and implemented as guidance, with the use of the term 'shall' therefore becoming a recommendation, as in the term 'should'.

Domestic play equipment falls outside of the scope of BS EN 1176 and has its own standards (BS EN 71 series – Safety of Toys). Where domestic equipment can be identified this will be acknowledged in the report but any comments concerning compliance will follow the requirements and recommendations of BS EN 1176.

When water play items, including spray parks, are inspected any comments concerning compliance within the inspection will refer to BS EN 1176. We have not assessed these against the requirements of BS EN 17232 (Water play equipment and features).

Other equipment that is not clearly identified as unsupervised or domestic (natural play, self-build equipment etc.) will be assessed for compliance with the relevant standard listed below:

- BS EN 15312** Free access multi-sports equipment
- BS EN 14974** Skateparks
- BS EN 16630** Permanently installed outdoor fitness equipment
- BS EN 16899** Parkour equipment (plus RPII/API guidance notes)

Annual and Post Installation inspections will take into consideration compliance with these current standards, and defects related to wear and vandalism. Items not listed in the report have not been included in the inspection. The inspection will cover the playground equipment and the active area (that area which is obviously part of the playground), nominally up to three metres around, the fence line if closer, or other areas as agreed.

Operational inspections only take into consideration defects related to cleanliness, equipment ground clearances, ground surface finishes, exposed foundations, sharp edges, missing parts, excessive wear (of moving parts) structural integrity, wear and vandalism.

Routine visual inspections relate only to the most obvious defects such as broken or missing parts, litter, vandalism and issues created by severe weather conditions (the intention is to identify hazards created by storm damage).

All inspections are non-dismantling, non-destructive and do not include any structural, toxicology or impact assessments defined in the standard; however, the inspector will undertake a manual test for stability and if equipment fails under manual load, or any other hazard is identified as an unacceptable risk, the owner/operator will be notified as soon as practicably possible.

The inspector will access all reasonably accessible equipment and will assess all reasonably accessible parts above the standing surface. Where it is not possible to access parts of the equipment without employing an alternative means of access the report will record the action required by the owner/operator to ensure the continued safe use of the equipment.

Ancillary equipment will be assessed using the inspector's knowledge and experience of the standards named in this document. (Note: Ancillary items are not included in the specific equipment-type parts of the EN 1176 series; hence they are not assessed for compliance with EN 1176 series and are subject to a general safety assessment).

The owner/operator is responsible for the overall safety of the equipment and area.

The inspector will not undertake any of the following works unless specifically agreed in writing at the time of order:

Checking the depth and underlying structural integrity of any surface areas and/or carrying out any testing of the impact attenuating properties of any surfaces; the identification of any corrosion, rot or other deterioration in any apparatus or equipment other than by an external inspection; the inspection of any equipment (or part thereof) that is beneath the playing surface (loose-fill materials may be moved to expose foundations); tightening any bolts, hinges or other fixing devices on any apparatus or equipment; assessing or inspecting any electrical installations contained on any site and/or apparatus and/or equipment; assessing or inspecting any water supplies and/or water features and/or any associated computerised systems (including carrying out any programming); where planting or trees are mentioned in the report no assessments of toxicity, suitability or condition are undertaken – the owner/operator should have suitable inspections provided by a competent person.

The owner/operator should have a 'design risk assessment' provided by the manufacturer/designer of the area for the equipment and location in which the facility is installed.

The operator is responsible for managing risks of their provision and is required by law to carry out a 'suitable and sufficient assessment' of the risks associated with a site or activity. This inspection shall be considered as contributing to the operator's discharge of this responsibility.

The details contained within the report are a snapshot of the condition at the time of inspection only and subsequent events may affect the condition of the facility. Suggested remedial actions are based on the knowledge and experience of the inspector and/or that of the inspection company. The owner/operator should always seek the advice of the manufacturer or a competent person when undertaking repairs and/or modifications to equipment.

A full copy of the Play Inspection Company Ltd. Terms & Conditions is available on our website ([www.playinspections.co.uk](http://www.playinspections.co.uk))

The operator is responsible for following the guidance of the relevant standards. The standards give guidance on the installation, inspection, maintenance and operation of the various types of facilities. The inspection guidance is listed in Table 1, with an indication of which parts will be included in an RPII Annual or Post-Installation Inspection. The relevant standards also contain additional parts which the operator should follow.

Inspection recommendations of relevant standards Refer to relevant standards for full text	Annual Main	RPII Annual/ Post Installation Inspection
6.1 d) Overall levels of safety of equipment (see note 1)	✓	✓ [1]
6.1 d) Overall levels of safety of foundations (see note 1)	✓	✓ [1]
6.1 d) Overall levels of safety of playing surfaces (see note 2)	✓	✓ [2]
6.1 d) Compliance with the relevant parts of the standard and or risk assessment (see note 3)	✓	✓ [3]
6.1 d) Effects of weather	✓	✓
6.1 d) Presence of rot, decay or corrosion (see note 1)	✓	✓ [1]
6.1 d) Assessment of repairs made or added or replaced components (see note 4)	✓	✓ [4]
6.1 d) Excavation or dismantling/additional measures	✓	✗
6.2.1 Assessment of glass reinforced plastics (see note 5)	✓	✓ [5]
6.2.1 Inspection of one post equipment (see note 1)	✓	✓ [1]
6.2.4 Undertaking the Operators inspection protocol	✓	✗

NB: The clause numbers in table 1 are taken from BS EN 1176 - Part 7:2020. The content is equally applicable to all other relevant standards listed herein. Playgrounds contain a range of equipment from different manufacturers and installed over a number of years; operators should implement any guidance provided by the manufacturer. Item specific detail is not readily available to RPII Playground Inspectors, whose report contributes to the operator's overall Annual Main Inspection as detailed in the relevant standards.

[1] A manual test only is undertaken for stability. Wear and instability are only detectable where readily apparent without dismantling or destruction and without the use of tools, excavation or specialist equipment. Rot and corrosion are tested or with a hammer and/or steel rod. Decay in timber may exist which can only be found with specialist equipment.


[2] Only the visible condition and dimensional compliance of surface extent is considered. Neither testing of impact attenuating properties nor measurement of the thickness of bound surfaces are undertaken on RPII annual inspections.

[3] The inspection assesses compliance where this can be tested on site using manual methods without dismantling, destruction and without the use of tools or specialist equipment.

[4] The operator should use manufacturer's recommended parts, or equivalent. We are unable to verify if such parts have been used, and any subsequent change in quality or performance.

[5] Visible glass fibres will be noted in reports. The operator is responsible for repairs or replacement.

# Risk Assessment Matrix

			Scores in the report are multiplication factors of Likelihood x Severity					
			Severity>>					
<b>Likelihood</b>	Very High probability, if the situation is not addressed an accident is almost certain.	5	Very High	VL (5)	L (10)	M (15)	H (20)	VH (25)
	High probability an accident is probable without any added factor.	4	High	VL (4)	L (8)	M (12)	H (16)	H (20)
	Moderate probability an incident is foreseeable.	3	Moderate	VL (3)	L (6)	L (9)	M (12)	M (15)
	Some probability, requires a combination of factors to take place.	2	Low	VL (2)	VL (4)	L (6)	L (8)	L (10)
	No significant probability; lightning strike, freak accident.	1	Very Low	VL (1)	VL (2)	VL (3)	VL (4)	VL (5)
			Very Low	Low	Moderate	High	Very High	
			1	2	3	4	5	
			No injury likely e.g. damaged or soiled clothing, minor bruising, grazes	Minor injury, laceration or bruising requiring first aid only	Injury requiring medical intervention e.g. cuts requiring stitches	Serious injury including concussions or fracture of long bones	Severe injury involving a potential life changing injury or fatality	
			<b>Severity&gt;&gt;</b>					
<p>Note 1: The total risk scores included within our reports are a multiplication factor of the calculated Likelihood and Severity of each finding. Both Likelihood and Severity are given a number between 1 - 5 as shown on the matrix above and these two numbers are then multiplied together to give the total risk score that is shown against defects on the report. Total risk scores can be divided in both directions, i.e. a total risk score of 12 could be a Likelihood (3) x Severity (4) or Likelihood (4) x Severity (3).</p> <p>Note 2: When we inspect we only see a snapshot of the current condition of the equipment. It is the operators responsibility to ensure that there is a continuing level of maintenance to keep the equipment in good working order and the site fit for use.</p>								

**Equipment has been assessed to the following standards where relevant:**

- BS EN 1176 Parts 1-11 (Playground equipment and surfacing)
- BS EN 14974 (Facilities for users of roller sports equipment)
- BS EN 15312 (Free access multi-sports equipment)
- BS EN 16899 (Parkour Equipment)
- BS EN 16630 (Outdoor Fitness Equipment).

## Manor Road Playing Fields

Inspection Ref: 2180422

Site Ref: 63949

Inspected: 26-September-2023 - 07:03 by Liam Last

Risk Assessment: 15 Moderate Risk



**Location:**

The site is located in an area of public open space and is not directly overlooked by any properties in the local community.

**Disabled Access:**

Generally accessible; an area accessible to most.

**i 8 - Low Risk**

**Item:** Site General  
**Manufacturer:** Owner/Operator  
**Surface Type:** N/A  
**Item Quantity:** 1  
**Equipment Compliance:** N/A  
**Surface Area Compliance:** N/A

**Total Findings:** 6



**Finding 1**

A section of pathway edging is damaged - Replace

**Finding 2**

There is a redundant spring base in the area - Remove or reinstate the surface

**Finding 3**

Signage should be provided for the outdoor fitness equipment in accordance with the requirements of BS EN 16630, key requirements of the sign include, but are not limited to, intended users, medical safety and emergency contact details - Provide appropriate signage

**Finding 4**

The grass is overgrown within the fitness area and may hide hazards - Reduce the length of grass to an acceptable height and maintain

**Finding 5**

There are redundant concrete foundations in the fitness area - Remove

**Finding 6**

There are cracks in the rolling surface of the skate area - Monitor for any further deterioration and repair as required

**i 4 - Very Low Risk**

**Item:** Sign  
**Manufacturer:** Owner/Operator  
**Surface Type:** Grass  
**Item Quantity:** 1  
**Equipment Compliance:** N/A  
**Surface Area Compliance:** N/A

**Total Findings:** 1



**Finding 1**

This item is satisfactory - no work required -

**i 8 - Low Risk**

**Item:** Gate - Self Closing  
**Manufacturer:** Not Identified  
**Surface Type:** Wet Pour  
**Item Quantity:** 1  
**Equipment Compliance:** N/A  
**Surface Area Compliance:** N/A



**Total Findings:** 4

**Finding 1**

There are openings that are less than 12mm that could trap or crush fingers - Provide a 12mm gap throughout full range of motion at both sides of gate

**Finding 2**

The rubber buffer is damaged - Replace rubber buffer

**Finding 3**

There is some damage to the item - Monitor for any further deterioration and repair as required

**Finding 4**

The gate is closing too quickly (less than 4 seconds) - Take corrective action to ensure that the gate closes in 4-8 seconds

**i 6 - Low Risk**

**Item:** Fence - Bow Top  
**Manufacturer:** Owner/Operator  
**Surface Type:** Grass  
**Item Quantity:** 1  
**Equipment Compliance:** N/A  
**Surface Area Compliance:** N/A



**Total Findings:** 2

**Finding 1**

There is some damage to the fence sections - Monitor for any further deterioration and repair as required

**Finding 2**

A number of fixing(s) have worked loose - Secure all loose fixings



**i** 8 - Low Risk

**Item:** Fence - Chainlink  
**Manufacturer:** Not Identified  
**Surface Type:** Grass  
**Item Quantity:** 1  
**Equipment Compliance:** N/A  
**Surface Area Compliance:** N/A



**Total Findings:** 1

**Finding 1**

The fence is severely damaged in places - Repair or replace all affected sections

**i** 6 - Low Risk

**Item:** Litter Bin  
**Manufacturer:** Not Identified  
**Surface Type:** Grass  
**Item Quantity:** 1  
**Equipment Compliance:** N/A  
**Surface Area Compliance:** N/A



**Total Findings:** 1

**Finding 1**

A number of fixing(s) have worked loose - Secure all loose fixings





**i** 6 - Low Risk

**Item:** Litter Bin  
**Manufacturer:** Not Identified  
**Surface Type:** N/A  
**Item Quantity:** 1  
**Equipment Compliance:** N/A  
**Surface Area Compliance:** N/A



**Total Findings:** 1

**Finding 1**

The liner of the litter bin is not secured - Ensure the lid/door is kept locked and the liner secured

**i** 4 - Very Low Risk

**Item:** Gate - Maintenance  
**Manufacturer:** Not Identified  
**Surface Type:** Grass  
**Item Quantity:** 1  
**Equipment Compliance:** N/A  
**Surface Area Compliance:** N/A



**Total Findings:** 1

**Finding 1**

The maintenance gate was correctly padlocked at the time of inspection, however this means that the inspector was unable to fully assess the gate - Ensure that there are 12mm gaps throughout the full range of motion on gate/s and between leaves where relevant



**i** 6 - Low Risk

**Item:** Bench  
**Manufacturer:** Not Identified  
**Surface Type:** Grass  
**Item Quantity:** 1  
**Equipment Compliance:** N/A  
**Surface Area Compliance:** N/A

**Total Findings:** 2



**Finding 1**

The surface has eroded in some areas and may be slippery in wet conditions - Reinstate the surface

**Finding 2**

The paint is flaking off the metalwork - Rub down and re-paint

**!** 12 - Moderate Risk

**Item:** Free Standing Slide  
**Manufacturer:** Not Identified  
**Surface Type:** Wet Pour  
**Item Quantity:** 1  
**Equipment Compliance:** No  
**Surface Area Compliance:** No



**Total Findings:** 12

**Finding 1**

There are trip hazards at the edges of the surface - Reinstate surrounding surface levels to remove the trip points

**Finding 3**

There are a number of dents in the slide surface - Monitor for any further deterioration and repair as required

**Finding 5**

There are gaps opening between the surfacing and the edging surround or between the joints in the surfacing - Monitor for any further deterioration and repair as required

**Finding 7**

The fixings have corroded excessively - Replace all corroded fixings

**Finding 9**

The item fails to meet the requirements of BS EN 1176 Part 1 4.2.7.2 for head and neck entrapment in the frame - Monitor - No remedial work recommended

**Finding 11**

The timber edge forms a hard object within the impact area of the equipment in contravention of the requirements of BS EN 1176 Part 1 - Monitor - No remedial work recommended

**Finding 2**

There is algae, silt or moss growth on the surface resulting in slippery conditions - Clean and treat appropriately

**Finding 4**

The surface is lifting at the edges and creating trip points - Repair perimeter of surfacing to remove trip points

**Finding 6**

Parts of the steel on this item have corroded excessively and the metal has perforated in places - Ensure all affected areas are treated and repaired

**Finding 8**

There is some minor damage to the surface - Monitor for any further deterioration and repair as required

**Finding 10**

The slide is predominately south facing and will catch the majority of the sun's heat during the day. Slide surfaces can become very warm during periods of sustained sunny weather - Monitor - No remedial work recommended

**Finding 12**

The grass has eroded within the impact area of the equipment and may not provide the necessary impact attenuating properties for the equipment fall height; the surface may also be slippery in wet weather - Reinstate the grass or provide an all weather surface

**! 12 - Moderate Risk**

**Item:** 1 Bay 2 Seat (Flat)  
**Manufacturer:** Wicksteed Playgrounds  
**Surface Type:** Bonded Rubber Mulch  
**Item Quantity:** 1  
**Equipment Compliance:** No  
**Surface Area Compliance:** No



**Total Findings:** 7

**Finding 1**

The chain openings are in excess of 8.6mm and do not meet the recommendations of BS EN 1176 Part 1 - Monitor - No remedial work recommended

**Finding 2**

There is some notable evidence of chain wear - Monitor for any further deterioration and replace when 40% worn

**Finding 3**

The chain links are worn in excess of 40% and require renewing - Replace worn chains

**Finding 4**

The bushes are worn or missing - Replace worn or missing bushes

**Finding 5**

There is some wear to the shackles - Monitor for any further deterioration and replace when 40% worn

**Finding 6**

The seats are too close to each other as defined in BS EN 1176 Part 2; this is a low risk failure and no remedial action is required - Monitor - No remedial work recommended

**Finding 7**

The surfacing dimensions are short and do not meet with the requirements of the current applicable standard - Monitor - no remedial action recommended

**i 6 - Low Risk**

**Item:** 1 Bay 2 Seat (Flat)  
**Manufacturer:** Wicksteed Playgrounds  
**Surface Type:** Bonded Rubber Mulch  
**Item Quantity:** 1  
**Equipment Compliance:** Yes  
**Surface Area Compliance:** Yes



**Total Findings:** 1

**Finding 1**

The seat has minor damage or wear - Monitor for any further deterioration and replace as required

**i** 8 - Low Risk

**Item:** Spring See-Saw  
**Manufacturer:** Not Identified  
**Surface Type:** Grass Matrix Tiles  
**Item Quantity:** 1  
**Equipment Compliance:** Yes  
**Surface Area Compliance:** Yes



**Total Findings:** 3

**Finding 1**

There is moderate damage to the surface - Repair the damaged areas of surfacing

**Finding 2**

There are gaps opening between the grass mat tiles - Provide additional ties or secure / reinstate surface

**Finding 3**

There is movement within the pivot point - Monitor for any further deterioration and repair as required

**i** 6 - Low Risk

**Item:** Bench  
**Manufacturer:** Not Identified  
**Surface Type:** Grass  
**Item Quantity:** 2  
**Equipment Compliance:** N/A  
**Surface Area Compliance:** N/A



**Total Findings:** 1

**Finding 1**

There is some damage to the item - Monitor for any further deterioration and repair as required

**i 8 - Low Risk**

**Item:** Picnic Table  
**Manufacturer:** Not Identified  
**Surface Type:** Grass  
**Item Quantity:** 1  
**Equipment Compliance:** N/A  
**Surface Area Compliance:** N/A



**Total Findings:** 4

**Finding 1**

The surface has eroded in some areas and may be slippery in wet conditions - Reinstate the surface

**Finding 2**

The slats are distorted - Monitor for any further deterioration and replace as required

**Finding 3**

There is some damage to the item - Monitor for any further deterioration and repair as required

**Finding 4**

There are projecting bolt thread(s) present - Remove excess thread length and deburr or provide cap

**i 6 - Low Risk**

**Item:** Climbing Frame  
**Manufacturer:** Wicksteed Playgrounds  
**Surface Type:** Bonded Rubber Mulch  
**Item Quantity:** 1  
**Equipment Compliance:** Yes  
**Surface Area Compliance:** Yes



**Total Findings:** 1

**Finding 1**

The paint is flaking off the metalwork - Rub down and re-paint

**i** 4 - Very Low Risk

**Item:** Multi Play (Junior)  
**Manufacturer:** Hags  
**Surface Type:** Bonded Rubber Mulch  
**Item Quantity:** 1  
**Equipment Compliance:** No  
**Surface Area Compliance:** Yes



**Total Findings:** 1

**Finding 1**

The item has been installed marginally too high which has resulted in the platform height being in excess of 600mm (610 mm) and technically, the height of the barriers are now insufficient to meet the requirements of BS EN 1176 Part 1. This is however a very low risk technicality and no remedial action is recommended as it has not affected the risk assessment of the item - No action given the risk assessment

**i** 4 - Very Low Risk

**Item:** Inclusive Roundabout  
**Manufacturer:** Hags  
**Surface Type:** Mixed Surface  
**Item Quantity:** 1  
**Equipment Compliance:** Yes  
**Surface Area Compliance:** Yes



**Total Findings:** 1

**Finding 1**

This item is satisfactory - no work required -

**i 4 - Very Low Risk**

**Item:** Basket Swing - Type 1  
**Manufacturer:** Hags  
**Surface Type:** Bonded Rubber Mulch  
**Item Quantity:** 1  
**Equipment Compliance:** Yes  
**Surface Area Compliance:** Yes



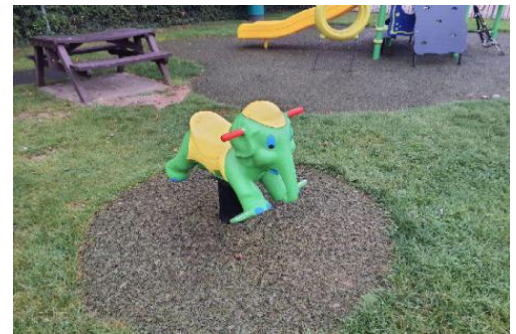
**Total Findings:** 1

**Finding 1**

This item is satisfactory - no work required -

**i 6 - Low Risk**

**Item:** Spring Elephant  
**Manufacturer:** Wicksteed Playgrounds  
**Surface Type:** Bonded Rubber Mulch  
**Item Quantity:** 1  
**Equipment Compliance:** No  
**Surface Area Compliance:** Yes



**Total Findings:** 3

**Finding 1**

The end of handgrips and/or footrests have a cross section of less than 15cm<sup>2</sup> and fail to meet the requirements of BS EN 1176 Part 6 - Monitor - No remedial work recommended

**Finding 2**

There is some damage to the item - Monitor for any further deterioration and repair as required

**Finding 3**

The paintwork on this item has been damaged or worn exposing the metal underneath which is rusting / corroding - Treat affected areas and repaint



**i** 10 - Low Risk

**Item:** 2 Bay (2 Flat, 2 Cradle)  
**Manufacturer:** Wicksteed Playgrounds  
**Surface Type:** Bonded Rubber Mulch  
**Item Quantity:** 1  
**Equipment Compliance:** No  
**Surface Area Compliance:** Yes



**Total Findings:** 4

**Finding 1**

The paintwork on this item has been damaged or worn exposing the metal underneath which is rusting / corroding - Treat affected areas and repaint

**Finding 2**

Parts of the steel on this item have corroded excessively and the metal has perforated in places - Ensure all affected areas are treated and repaired

**Finding 3**

The bushes are showing signs of wear - Monitor for any further deterioration and replace as required

**Finding 4**

The seat clearance from finished surface level to the underside of the seat is too low and does not meet the requirements of BS EN 1176 Part 2 (350mm minimum clearance required) - Adjust seat height/s (400mm-500mm is recommended)

**i** 6 - Low Risk

**Item:** Dish Roundabout  
**Manufacturer:** Hags  
**Surface Type:** Bonded Rubber Mulch  
**Item Quantity:** 1  
**Equipment Compliance:** Yes  
**Surface Area Compliance:** Yes



**Total Findings:** 1

**Finding 1**

A number of fixing(s) have worked loose - Secure all loose fixings

**i** 4 - Very Low Risk

**Item:** Cable Runway  
**Manufacturer:** Hags  
**Surface Type:** Grass Matrix Tiles  
**Item Quantity:** 1  
**Equipment Compliance:** Yes  
**Surface Area Compliance:** Yes



**Total Findings:** 1

**Finding 1**

The installation of the cable end does not appear to have been installed in accordance with the manufacturers recommendations - Refer to manufacturer

**i** 4 - Very Low Risk

**Item:** Multi Play (Senior)  
**Manufacturer:** Hags  
**Surface Type:** Bonded Rubber Mulch  
**Item Quantity:** 1  
**Equipment Compliance:** Yes  
**Surface Area Compliance:** Yes



**Total Findings:** 1

**Finding 1**

This item is satisfactory - no work required -

**i** 4 - Very Low Risk

**Item:** Rope Traverse  
**Manufacturer:** Hags  
**Surface Type:** Grass Matrix Tiles  
**Item Quantity:** 1  
**Equipment Compliance:** Yes  
**Surface Area Compliance:** Yes

**Total Findings:** 1



**Finding 1**

This item is satisfactory - no work required -

**i** 4 - Very Low Risk

**Item:** Rope Traverse  
**Manufacturer:** Hags  
**Surface Type:** Grass Matrix Tiles  
**Item Quantity:** 1  
**Equipment Compliance:** Yes  
**Surface Area Compliance:** Yes

**Total Findings:** 1



**Finding 1**

This item is satisfactory - no work required -

**i 4 - Very Low Risk**

**Item:** Swinging Steps  
**Manufacturer:** Hags  
**Surface Type:** Grass  
**Item Quantity:** 1  
**Equipment Compliance:** Yes  
**Surface Area Compliance:** Yes



**Total Findings:** 1

**Finding 1**

This item is satisfactory - no work required -

**i 8 - Low Risk**

**Item:** Sign  
**Manufacturer:** Owner/Operator  
**Surface Type:** N/A  
**Item Quantity:** 1  
**Equipment Compliance:** N/A  
**Surface Area Compliance:** N/A



**Total Findings:** 3

**Finding 1**

The plywood has delaminated in some places - Remove all rough or splintered edges.

**Finding 3**

There is or are fixings missing on the item - Replace all missing fixings

**Finding 2**

There are projecting bolt thread(s) present - Remove excess thread length and deburr or provide cap

**i** 10 - Low Risk

**Item:** Gate - Self Closing  
**Manufacturer:** Not Identified  
**Surface Type:** Bitmac  
**Item Quantity:** 2  
**Equipment Compliance:** N/A  
**Surface Area Compliance:** N/A



**Total Findings:** 7

**Finding 1**

There are openings that are less than 12mm that could trap or crush fingers - Provide a 12mm gap throughout full range of motion at both sides of gate

**Finding 2**

The gate is closing too quickly (less than 4 seconds) - Take corrective action to ensure that the gate closes in 4-8 seconds

**Finding 3**

The rubber buffer is missing from the latch plate - Replace rubber buffer

**Finding 4**

The gate is not operating correctly - Take effective action to ensure the gate closes between 4 and 8 seconds

**Finding 5**

There is surface corrosion / rust present on the item - Consider treating the item

**Finding 6**

The gate spring cover has slipped out of position - Replace the spring cover in the correct position

**Finding 7**

There is some minor damage to the surface - Monitor for any further deterioration and repair as required

**i** 6 - Low Risk

**Item:** Gate - Maintenance  
**Manufacturer:** Not Identified  
**Surface Type:** Grass  
**Item Quantity:** 1  
**Equipment Compliance:** N/A  
**Surface Area Compliance:** N/A



**Total Findings:** 2

**Finding 1**

The maintenance gate was correctly padlocked at the time of inspection, however this means that the inspector was unable to fully assess the gate - Ensure that there are 12mm gaps throughout the full range of motion on gate/s and between leaves where relevant

**Finding 2**

There is some damage to the item - Monitor for any further deterioration and repair as required

**i** 8 - Low Risk

**Item:** Fence - Bow Top  
**Manufacturer:** Not Identified  
**Surface Type:** Grass  
**Item Quantity:** 1  
**Equipment Compliance:** N/A  
**Surface Area Compliance:** N/A



**Total Findings:** 4

**Finding 1**

There is or are fixings missing on the item - Replace all missing fixings

**Finding 2**

There is some damage to the fence sections - Monitor for any further deterioration and repair as required

**Finding 3**

There is surface corrosion / rust present on the item - Consider treating the item

**Finding 4**

There are projecting bolt thread(s) present - Remove excess thread length and deburr or provide cap

**i** 6 - Low Risk

**Item:** Litter Bin  
**Manufacturer:** Not Identified  
**Surface Type:** N/A  
**Item Quantity:** 1  
**Equipment Compliance:** N/A  
**Surface Area Compliance:** N/A



**Total Findings:** 1

**Finding 1**

The liner of the litter bin is not secured - Ensure the lid/door is kept locked and the liner secured

**i** 4 - Very Low Risk

**Item:** Hedge  
**Manufacturer:** Natural Feature  
**Surface Type:** Grass  
**Item Quantity:** 1  
**Equipment Compliance:** N/A  
**Surface Area Compliance:** N/A



**Total Findings:** 1

**Finding 1**

This item is satisfactory - no work required -

**i** 8 - Low Risk

**Item:** Quarter Pipe  
**Manufacturer:** Not Identified  
**Surface Type:** Bitmac  
**Item Quantity:** 1  
**Equipment Compliance:** No  
**Surface Area Compliance:** Yes



**Total Findings:** 5

**Finding 1**

The height of the barrier is less than 1200mm at a distance exceeding 300mm from the front of the barrier and fails the requirements of BS EN 14974 - Monitor - No remedial work recommended

**Finding 2**

There is offensive graffiti present - Remove as soon as practicable

**Finding 3**

The riding surface of the ramp has some damage apparent - Monitor for any further deterioration and repair as required

**Finding 4**

There is algae or moss on the surface of the equipment - Clean and treat appropriately

**Finding 5**

There are trip hazards at the edges of the surface - Reinstate surrounding surface levels to remove the trip points

**i** 10 - Low Risk

**Item:** Start Ramp  
**Manufacturer:** StreetSkapes  
**Surface Type:** Bitmac  
**Item Quantity:** 1  
**Equipment Compliance:** No  
**Surface Area Compliance:** Yes



**Total Findings:** 8

**Finding 1**

There is offensive graffiti present - Remove as soon as practicable

**Finding 2**

The riding surface of the ramp has some damage apparent - Monitor for any further deterioration and repair as required

**Finding 3**

The riding surface of the ramp is damaged - Repair all damaged surfaces

**Finding 4**

The kicker plate is loose - Secure

**Finding 5**

The height of the barrier is less than 1200mm at a distance exceeding 300mm from the front of a barrier and fails the requirements of BS EN 14974 - Monitor - No remedial work recommended

**Finding 6**

There is paint on the ramp - Remove

**Finding 7**

Joints between the riding surfaces should not be greater than 5mm to meet the requirements of BS EN 14974 - Take corrective action to ensure that the gaps between the joints do not exceed 5mm

**Finding 8**

There is or are fixings missing on the item - Replace all missing fixings

**i** 4 - Very Low Risk

**Item:** Grind Box  
**Manufacturer:** StreetSkapes  
**Surface Type:** Bitmac  
**Item Quantity:** 1  
**Equipment Compliance:** Yes  
**Surface Area Compliance:** Yes



**Total Findings:** 1

**Finding 1**

This item is satisfactory - no work required -



**i** 10 - Low Risk

**Item:** Fun Box  
**Manufacturer:** Streetscape Products  
**Surface Type:** Bitmac  
**Item Quantity:** 1  
**Equipment Compliance:** No  
**Surface Area Compliance:** Yes



**Total Findings:** 6

**Finding 1**

The riding surface of the ramp is damaged - Repair all damaged surfaces

**Finding 2**

The kicker plate has sunk into the surface leaving a vertical height differences in excess of 3mm in contravention of BS EN 14974 - Reinstate the surface to level

**Finding 3**

There is or are fixings missing on the item - Replace all missing fixings

**Finding 4**

There is algae or moss on the surface of the equipment - Clean and treat appropriately

**Finding 5**

The item has insufficient safety zone allowed as required by BS EN 14974. This should consist of a bound uniform material and extend at least 2.0 metres on most items (1.50m for ledges, curbs and rails installed adjacent to each other) - Monitor - No remedial work recommended

**Finding 6**

There is or are fixings missing on the item - Replace all missing fixings

**i** 10 - Low Risk

**Item:** Start Ramp  
**Manufacturer:** StreetSkapes  
**Surface Type:** Bitmac  
**Item Quantity:** 1  
**Equipment Compliance:** No  
**Surface Area Compliance:** Yes

**Total Findings:** 4



**Finding 1**

There is or are fixings missing on the item - Replace all missing fixings

**Finding 3**

The kicker plate has sunk into the surface creating a height differences exceeding 3mm in contravention of BS EN 14974 - Reinstate the surface to level

**Finding 2**

The riding surface of the ramp is damaged - Repair all damaged surfaces

**Finding 4**

The height of the barrier is less than 1200mm at a distance exceeding 300mm from the front of the barrier and fails the requirements of BS EN 14974 - Monitor - No remedial work recommended

**i** 8 - Low Risk

**Item:** Quarter Pipe  
**Manufacturer:** StreetSkapes  
**Surface Type:** Bitmac  
**Item Quantity:** 1  
**Equipment Compliance:** No  
**Surface Area Compliance:** Yes

**Total Findings:** 5



**Finding 1**

The riding surface of the ramp has some damage apparent - Monitor for any further deterioration and repair as required

**Finding 3**

There is algae or moss on the surface of the equipment - Clean and treat appropriately

**Finding 5**

The height of the barrier is less than 1200mm at a distance exceeding 300mm from the front of the barrier and fails the requirements of BS EN 14974 - Monitor - No remedial work recommended

**Finding 2**

The kicker plate has sunk into the surface creating a height differences exceeding 3mm in contravention of the requirements of BS EN 14974 - Reinstate the surface to level

**Finding 4**

The identification label is damaged - Remove the label

**i** 9 - Low Risk

**Item:** Half Pipe  
**Manufacturer:** StreetSkapes  
**Surface Type:** Mixed Surface  
**Item Quantity:** 1  
**Equipment Compliance:** No  
**Surface Area Compliance:** Yes

**Total Findings:** 13



**Finding 1**

There are significant gaps (over 30mm) between the surface and the edging or between the joints in the surface; these are large enough for a small foot to enter - Repair surfacing

**Finding 2**

There is weed / vegetation growth on, between, or around the edges of the surfacing - Remove weed / vegetation growth

**Finding 3**

There is moderate damage to the surface - Repair the damaged areas of surfacing

**Finding 4**

The weld(s) on this item have failed - Repair item

**Finding 5**

There are post / end caps missing from the item - Replace missing post caps

**Finding 6**

There is surface corrosion / rust present on the item - Consider treating the item

**Finding 7**

There is or are fixings missing on the item - Replace all missing fixings

**Finding 8**

There are projecting bolt thread(s) present - Remove excess thread length and deburr or provide cap

**Finding 9**

The height of the barrier is less than 1200mm and fails the requirements of BS EN 14974 - Monitor - No remedial work recommended

**Finding 10**

There is algae or moss on the surface of the equipment - Clean and treat appropriately

**Finding 11**

The riding surface of the ramp has some damage apparent - Monitor for any further deterioration and repair as required

**Finding 12**

The plywood has delaminated in some places - Remove all rough or splintered edges.

**Finding 13**

There is a change in the level of the rolling surface in excess of 3mm and the item fails the requirements of BS EN 14974 Clause 5.1.2.3 - Monitor - No remedial work recommended

**i 4 - Very Low Risk**

**Item:** Sign  
**Manufacturer:** Owner/Operator  
**Surface Type:** N/A  
**Item Quantity:** 1  
**Equipment Compliance:** N/A  
**Surface Area Compliance:** N/A



**Total Findings:** 1

**Finding 1**

This item is satisfactory - no work required -

**i 8 - Low Risk**

**Item:** Gate - Self Closing  
**Manufacturer:** Not Identified  
**Surface Type:** Grass  
**Item Quantity:** 1  
**Equipment Compliance:** N/A  
**Surface Area Compliance:** N/A



**Total Findings:** 5

**Finding 1**

There are trip hazards at the edges of the surface - Reinststate surrounding surface levels to remove the trip points

**Finding 3**

The weld(s) on this item have failed - Repair item

**Finding 5**

There is some damage to the item - Monitor for any further deterioration and repair as required

**Finding 2**

The gate is not operating correctly - Take effective action to ensure the gate closes between 4 and 8 seconds

**Finding 4**

The gate passes the slamming post - Adjust gate



**i** 6 - Low Risk

**Item:** Maintenance Gate  
**Manufacturer:** Not Identified  
**Surface Type:** Grass  
**Item Quantity:** 1  
**Equipment Compliance:** N/A  
**Surface Area Compliance:** N/A



**Total Findings:** 1

**Finding 1**

The gate is missing - Replace the gate

**i** 6 - Low Risk

**Item:** Fence - Bow Top  
**Manufacturer:** Not Identified  
**Surface Type:** Grass  
**Item Quantity:** 1  
**Equipment Compliance:** N/A  
**Surface Area Compliance:** N/A



**Total Findings:** 1

**Finding 1**

There is some damage to the fence sections - Monitor for any further deterioration and repair as required



**i** 10 - Low Risk

**Item:** BMX Track  
**Manufacturer:** Not Identified  
**Surface Type:** Grass  
**Item Quantity:** 1  
**Equipment Compliance:** N/A  
**Surface Area Compliance:** N/A

**Total Findings:** 3



**Finding 1**

BMX tracks are not currently covered by any British or European Standard; comments made in the report are based on the application of our knowledge and understanding of the Wheeled Sports Standard (BS EN 14974) and their maintenance and the area has been risk assessed accordingly - Monitor use and review risk assessment regularly

**Finding 3**

The grass is overgrown within the play area and may hide hazards - Reduce the length of grass to an acceptable height and maintain

**Finding 2**

There is weed / vegetation growth on, between, or around the edges of the surfacing - Remove weed / vegetation growth



**!** 12 - Moderate Risk

**Item:** Multi Use Games Area (MUGA)  
**Manufacturer:** Not Identified  
**Surface Type:** Carpet System  
**Item Quantity:** 1  
**Equipment Compliance:** N/A  
**Surface Area Compliance:** N/A



**Total Findings:** 16

**Finding 1**

There are a number of redundant cable ties attached to the gate - Remove redundant cable ties

**Finding 3**

There is/are finger entrapments in the frame due to missing fixings and the item fails to meet the requirements of BS EN 15312 Clause 4.4.2.2 Entrapment of fingers - Provide missing fixings to remove entrapment

**Finding 5**

A panel is damaged - Repair or replace as required

**Finding 7**

There is a redundant sign on the muga - Remove if no longer required

**Finding 9**

A number of fixing(s) have worked loose on the clamping rails - Secure all loose fixings

**Finding 11**

There is moderate damage to the surface - Repair the damaged areas of surfacing

**Finding 13**

There is moderate damage to the goal panel and a wooden board has been used as a temporary repair - Replace panel

**Finding 15**

There is or are fixings missing on the item - Replace all missing fixings

**Finding 2**

There is or are numerous fixings missing on the clamping rails - Replace all missing fixings

**Finding 4**

There is/are finger entrapments in the frame and the item fails to meet the requirements of BS EN 15312 Clause 4.4.2.2 Entrapment of fingers - Monitor - No remedial work recommended

**Finding 6**

There is some damage to the goal panel - Repair or replace as required

**Finding 8**

There is or are fixings missing on the item - Replace all missing fixings

**Finding 10**

There is algae or moss growth on the surface resulting in slippery conditions - Clean and treat appropriately

**Finding 12**

Socket covers are missing creating a foot entrapment - Replace the cover

**Finding 14**

The paint is flaking off the metalwork - Rub down and re-paint

**Finding 16**

A panel is loose - Secure

**i** 6 - Low Risk

**Item:** Shelter  
**Manufacturer:** Caloo  
**Surface Type:** Grass Matrix Tiles  
**Item Quantity:** 1  
**Equipment Compliance:** N/A  
**Surface Area Compliance:** N/A



**Total Findings:** 1

**Finding 1**

There is litter/debris in the area - Remove litter/debris from the area and maintain

**i** 6 - Low Risk

**Item:** Gate - Self Closing  
**Manufacturer:** Not Identified  
**Surface Type:** Grass  
**Item Quantity:** 1  
**Equipment Compliance:** N/A  
**Surface Area Compliance:** N/A



**Total Findings:** 2

**Finding 1**

The gate/s was / were locked or secured at the time of the inspection and a full inspection could not be undertaken - Complete inspection of gate/s when re-opened

**Finding 2**

The rubber buffer is missing from the latch plate - Replace rubber buffer



**i** 8 - Low Risk

**Item:** Fence - Bow Top  
**Manufacturer:** Not Identified  
**Surface Type:** Grass  
**Item Quantity:** 1  
**Equipment Compliance:** N/A  
**Surface Area Compliance:** N/A



**Total Findings:** 1

**Finding 1**

There is or are fixings missing on the item - Replace all missing fixings

**i** 8 - Low Risk

**Item:** Shoulder Press  
**Manufacturer:** The Great Outdoor Gym Company  
**Surface Type:** Crushed Stone  
**Item Quantity:** 1  
**Equipment Compliance:** Yes  
**Surface Area Compliance:** Yes



**Total Findings:** 3

**Finding 1**

There is or are fixings missing on the item - Replace all missing fixings

**Finding 2**

One or more handgrip(s) are damaged or missing. - Replace missing or damaged handgrips

**Finding 3**

The paintwork on this item has been damaged or worn exposing the metal underneath which is rusting / corroding - Treat affected areas and repaint

**i** 8 - Low Risk

**Item:** Step Up Station  
**Manufacturer:** The Great Outdoor Gym Company  
**Surface Type:** Grass  
**Item Quantity:** 1  
**Equipment Compliance:** No  
**Surface Area Compliance:** Yes



**Total Findings:** 2

**Finding 1**

There are obstacles located within the movement space of the item in contravention of the requirements of BS EN 16630 - Monitor - No remedial work recommended

**Finding 2**

There are trip hazards at the edges of the surface - Reinstate surrounding surface levels to remove the trip points

**!** 15 - Moderate Risk

**Item:** Cross Trainer  
**Manufacturer:** The Great Outdoor Gym Company  
**Surface Type:** Crushed Stone  
**Item Quantity:** 1  
**Equipment Compliance:** No  
**Surface Area Compliance:** Yes



**Total Findings:** 3

**Finding 1**

The tread surface does not have a 10mm high safeguard that extends around the front of the surface and at least 75% of the sides of the surface as required by BS EN 16630 - Monitor - No remedial work recommended

**Finding 2**

There are gaps between 8 and 60mm creating a potential crush/shear point in contravention of the requirements of BS EN 16630 - Adjust the cover

**Finding 3**

The cross trainer foot has become unattached - Repair item

**i** 8 - Low Risk

**Item:** Cross Trainer  
**Manufacturer:** The Great Outdoor Gym Company  
**Surface Type:** Crushed Stone  
**Item Quantity:** 1  
**Equipment Compliance:** No  
**Surface Area Compliance:** Yes



**Total Findings:** 4

**Finding 1**

One or more handgrip(s) are damaged or missing. - Replace missing or damaged handgrips

**Finding 2**

The tread surface does not have a 10mm high safeguard that extends around the front of the surface and at least 75% of the sides of the surface as required by BS EN 16630 - Monitor - No remedial work recommended

**Finding 3**

There are gaps between 8 and 60mm creating a potential crush/shear point in contravention of the requirements of BS EN 16630 - Monitor - No remedial work recommended

**Finding 4**

There is some damage to the sign - Monitor for any further deterioration and repair as required

**i** 8 - Low Risk

**Item:** Cycle  
**Manufacturer:** The Great Outdoor Gym Company  
**Surface Type:** Crushed Stone  
**Item Quantity:** 1  
**Equipment Compliance:** No  
**Surface Area Compliance:** Yes



**Total Findings:** 4

**Finding 1**

There is some damage to the sign - Replace sign

**Finding 2**

The paintwork on this item has been damaged or worn exposing the metal underneath which is rusting / corroding - Treat affected areas and repaint

**Finding 3**

There is some damage to the handgrip - Monitor for any further deterioration and repair as required

**Finding 4**

There are obstacles located within the movement space of the item in contravention of the requirements of BS EN 16630 - Monitor - No remedial work recommended

**i 6 - Low Risk**

**Item:** Hand Bike  
**Manufacturer:** The Great Outdoor Gym Company  
**Surface Type:** Crushed Stone  
**Item Quantity:** 1  
**Equipment Compliance:** Yes  
**Surface Area Compliance:** Yes



**Total Findings:** 2

**Finding 1**

There is some damage to the handgrip - Monitor for any further deterioration and repair as required

**Finding 2**

The paintwork on this item has been damaged or worn exposing the metal underneath which is rusting / corroding - Treat affected areas and repaint

**i 4 - Very Low Risk**

**Item:** Ab Station  
**Manufacturer:** The Great Outdoor Gym Company  
**Surface Type:** Crushed Stone  
**Item Quantity:** 1  
**Equipment Compliance:** Yes  
**Surface Area Compliance:** Yes



**Total Findings:** 1

**Finding 1**

This item is satisfactory - no work required -

**i** 9 - Low Risk

**Item:** Cycle  
**Manufacturer:** The Great Outdoor Gym Company  
**Surface Type:** Crushed Stone  
**Item Quantity:** 1  
**Equipment Compliance:** No  
**Surface Area Compliance:** Yes



**Total Findings:** 3

**Finding 1**

There are obstacles located within the movement space of the item in contravention of the requirements of BS EN 16630 - Monitor - No remedial work recommended

**Finding 2**

There is some damage to the sign - Replace

**Finding 3**

There is some damage to the item - Monitor for any further deterioration and repair as required

**i** 9 - Low Risk

**Item:** Leg Press  
**Manufacturer:** The Great Outdoor Gym Company  
**Surface Type:** Crushed Stone  
**Item Quantity:** 1  
**Equipment Compliance:** No  
**Surface Area Compliance:** Yes



**Total Findings:** 3

**Finding 1**

There is some damage to the sign - Replace

**Finding 2**

There are obstacles located within the movement space of the item in contravention of the requirements of BS EN 16630 - Monitor - No remedial work recommended

**Finding 3**

The item has missing component(s) - Consider replacing missing components

**i 8 - Low Risk**

**Item:** Dip Station  
**Manufacturer:** The Great Outdoor Gym Company  
**Surface Type:** Crushed Stone  
**Item Quantity:** 1  
**Equipment Compliance:** No  
**Surface Area Compliance:** Yes



**Total Findings:** 3

**Finding 1**

There are projecting bolt thread(s) present - Remove excess thread length and deburr or provide cap

**Finding 2**

The paintwork on this item has been damaged or worn exposing the metal underneath which is rusting / corroding - Treat affected areas and repaint

**Finding 3**

There are obstacles located within the movement space of the item in contravention of the requirements of BS EN 16630 - Monitor - No remedial work recommended

**i 9 - Low Risk**

**Item:** Pull Up Station  
**Manufacturer:** The Great Outdoor Gym Company  
**Surface Type:** Crushed Stone  
**Item Quantity:** 1  
**Equipment Compliance:** No  
**Surface Area Compliance:** Yes



**Total Findings:** 2

**Finding 1**

There are obstacles located within the movement space of the item in contravention of the requirements of BS EN 16630 - Monitor - No remedial work recommended

**Finding 2**

The sign is missing and sharp edges are present - Replace sign

## Findings information

**i** 4 - Very Low Risk (Finding 1)

**Item:** Ancillary Items - Site General  
**Manufacturer:** Owner/Operator

**Risk Level:** V - Very Low Risk  
**Surface:** N/A



**Finding:** A section of pathway edging is damaged

**Action:** Replace

**i** 6 - Low Risk (Finding 2)

**Item:** Ancillary Items - Site General  
**Manufacturer:** Owner/Operator

**Risk Level:** L - Low Risk  
**Surface:** N/A



**Finding:** There is a redundant spring base in the area

**Action:** Remove or reinstate the surface



**i** 4 - Very Low Risk (Finding 3)

**Item:** Ancillary Items - Site General  
**Manufacturer:** Owner/Operator

**Risk Level:** V - Very Low Risk  
**Surface:** N/A



**Finding:** Signage should be provided for the outdoor fitness equipment in accordance with the requirements of BS EN 16630, key requirements of the sign include, but are not limited to, intended users, medical safety and emergency contact details  
**Action:** Provide appropriate signage

**i** 6 - Low Risk (Finding 4)

**Item:** Ancillary Items - Site General  
**Manufacturer:** Owner/Operator

**Risk Level:** L - Low Risk  
**Surface:** N/A



**Finding:** The grass is overgrown within the fitness area and may hide hazards  
**Action:** Reduce the length of grass to an acceptable height and maintain

**i 8 - Low Risk (Finding 5)**

<b>Item:</b>	Ancillary Items - Site General	<b>Risk Level:</b>	L - Low Risk
<b>Manufacturer:</b>	Owner/Operator	<b>Surface:</b>	N/A



**Finding:** There are redundant concrete foundations in the fitness area  
**Action:** Remove

**i 6 - Low Risk (Finding 6)**

<b>Item:</b>	Ancillary Items - Site General	<b>Risk Level:</b>	L - Low Risk
<b>Manufacturer:</b>	Owner/Operator	<b>Surface:</b>	N/A



**Finding:** There are cracks in the rolling surface of the skate area  
**Action:** Monitor for any further deterioration and repair as required

**i** 8 - Low Risk (Finding 1)

**Item:** Gates - Gate - Self Closing  
**Manufacturer:** Not Identified

**Risk Level:** L - Low Risk  
**Surface:** Wet Pour



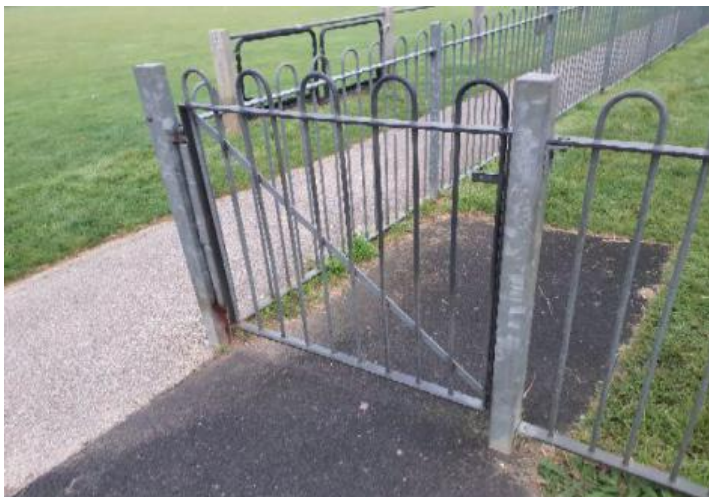
**Finding:** There are openings that are less than 12mm that could trap or crush fingers

**Action:** Provide a 12mm gap throughout full range of motion at both sides of gate

**i** 6 - Low Risk (Finding 2)

**Item:** Gates - Gate - Self Closing  
**Manufacturer:** Not Identified

**Risk Level:** L - Low Risk  
**Surface:** Wet Pour



**Finding:** The rubber buffer is damaged

**Action:** Replace rubber buffer

**i** 6 - Low Risk (Finding 3)

**Item:** Gates - Gate - Self Closing  
**Manufacturer:** Not Identified

**Risk Level:** L - Low Risk  
**Surface:** Wet Pour



**Finding:** There is some damage to the item

**Action:** Monitor for any further deterioration and repair as required

**i** 8 - Low Risk (Finding 4)

**Item:** Gates - Gate - Self Closing  
**Manufacturer:** Not Identified

**Risk Level:** L - Low Risk  
**Surface:** Wet Pour



**Finding:** The gate is closing too quickly (less than 4 seconds)

**Action:** Take corrective action to ensure that the gate closes in 4-8 seconds

**i** 6 - Low Risk (Finding 1)

**Item:** Fences - Fence - Bow Top  
**Manufacturer:** Owner/Operator

**Risk Level:** L - Low Risk  
**Surface:** Grass



**Finding:** There is some damage to the fence sections

**Action:** Monitor for any further deterioration and repair as required

**i** 6 - Low Risk (Finding 2)

**Item:** Fences - Fence - Bow Top  
**Manufacturer:** Owner/Operator

**Risk Level:** L - Low Risk  
**Surface:** Grass



**Finding:** A number of fixing(s) have worked loose

**Action:** Secure all loose fixings

**i** 8 - Low Risk (Finding 1)

**Item:** Fences - Fence - Chainlink  
**Manufacturer:** Not Identified

**Risk Level:** L - Low Risk  
**Surface:** Grass



**Finding:** The fence is severely damaged in places

**Action:** Repair or replace all affected sections

**i** 6 - Low Risk (Finding 1)

**Item:** Ancillary Items - Litter Bin  
**Manufacturer:** Not Identified

**Risk Level:** L - Low Risk  
**Surface:** Grass



**Finding:** A number of fixing(s) have worked loose

**Action:** Secure all loose fixings

**i** 6 - Low Risk (Finding 1)

**Item:** Ancillary Items - Litter Bin  
**Manufacturer:** Not Identified

**Risk Level:** L - Low Risk  
**Surface:** N/A



**Finding:** The liner of the litter bin is not secured

**Action:** Ensure the lid/door is kept locked and the liner secured

**i** 4 - Very Low Risk (Finding 1)

**Item:** Gates - Gate - Maintenance  
**Manufacturer:** Not Identified

**Risk Level:** V - Very Low Risk  
**Surface:** Grass



**Finding:** The maintenance gate was correctly padlocked at the time of inspection, however this means that the inspector was unable to fully assess the gate

**Action:** Ensure that there are 12mm gaps throughout the full range of motion on gate/s and between leaves where relevant

**i** 6 - Low Risk (Finding 1)

**Item:** Ancillary Items - Bench  
**Manufacturer:** Not Identified

**Risk Level:** L - Low Risk  
**Surface:** Grass



**Finding:** The surface has eroded in some areas and may be slippery in wet conditions

**Action:** Reinststate the surface



**i** 6 - Low Risk (Finding 2)

**Item:** Ancillary Items - Bench  
**Manufacturer:** Not Identified

**Risk Level:** L - Low Risk  
**Surface:** Grass



**Finding:** The paint is flaking off the metalwork

**Action:** Rub down and re-paint

**i** 8 - Low Risk (Finding 1)

**Item:** Other - Free Standing Slide  
**Manufacturer:** Not Identified

**Risk Level:** L - Low Risk  
**Surface:** Wet Pour



**Finding:** There are trip hazards at the edges of the surface

**Action:** Reinstate surrounding surface levels to remove the trip points

**8 - Low Risk (Finding 2)**

**Item:** Other - Free Standing Slide  
**Manufacturer:** Not Identified  
**Risk Level:** L - Low Risk  
**Surface:** Wet Pour



**Finding:** There is algae, silt or moss growth on the surface resulting in slippery conditions  
**Action:** Clean and treat appropriately

**4 - Very Low Risk (Finding 3)**

**Item:** Other - Free Standing Slide  
**Manufacturer:** Not Identified  
**Risk Level:** V - Very Low Risk  
**Surface:** Wet Pour



**Finding:** There are a number of dents in the slide surface  
**Action:** Monitor for any further deterioration and repair as required

**i** 8 - Low Risk (Finding 4)

**Item:** Other - Free Standing Slide  
**Manufacturer:** Not Identified

**Risk Level:** L - Low Risk  
**Surface:** Wet Pour



**Finding:** The surface is lifting at the edges and creating trip points  
**Action:** Repair perimeter of surfacing to remove trip points

**i** 6 - Low Risk (Finding 5)

**Item:** Other - Free Standing Slide  
**Manufacturer:** Not Identified

**Risk Level:** L - Low Risk  
**Surface:** Wet Pour



**Finding:** There are gaps opening between the surfacing and the edging surround or between the joints in the surfacing  
**Action:** Monitor for any further deterioration and repair as required

12 - Moderate Risk (Finding 6)

**Item:** Other - Free Standing Slide  
**Manufacturer:** Not Identified

**Risk Level:** M - Moderate Risk  
**Surface:** Wet Pour



**Finding:** Parts of the steel on this item have corroded excessively and the metal has perforated in places

**Action:** Ensure all affected areas are treated and repaired

**i** 8 - Low Risk (Finding 7)

**Item:** Other - Free Standing Slide  
**Manufacturer:** Not Identified

**Risk Level:** L - Low Risk  
**Surface:** Wet Pour



**Finding:** The fixings have corroded excessively

**Action:** Replace all corroded fixings

**i** 4 - Very Low Risk (Finding 8)

**Item:** Other - Free Standing Slide  
**Manufacturer:** Not Identified

**Risk Level:** V - Very Low Risk  
**Surface:** Wet Pour



**Finding:** There is some minor damage to the surface

**Action:** Monitor for any further deterioration and repair as required

**i** 5 - Very Low Risk (Finding 9)

**Item:** Other - Free Standing Slide  
**Manufacturer:** Not Identified

**Risk Level:** V - Very Low Risk  
**Surface:** Wet Pour



**Finding:** The item fails to meet the requirements of BS EN 1176 Part 1 4.2.7.2 for head and neck entrapment in the frame

**Action:** Monitor - No remedial work recommended

**i** 6 - Low Risk (Finding 10)

**Item:** Other - Free Standing Slide  
**Manufacturer:** Not Identified

**Risk Level:** L - Low Risk  
**Surface:** Wet Pour



**Finding:** The slide is predominately south facing and will catch the majority of the sun's heat during the day. Slide surfaces can become very warm during periods of sustained sunny weather

**Action:** Monitor - No remedial work recommended

**i** 5 - Very Low Risk (Finding 11)

**Item:** Other - Free Standing Slide  
**Manufacturer:** Not Identified

**Risk Level:** V - Very Low Risk  
**Surface:** Wet Pour



**Finding:** The timber edge forms a hard object within the impact area of the equipment in contravention of the requirements of BS EN 1176 Part 1

**Action:** Monitor - No remedial work recommended

**i** 8 - Low Risk (Finding 12)

**Item:** Other - Free Standing Slide  
**Manufacturer:** Not Identified

**Risk Level:** L - Low Risk  
**Surface:** Wet Pour



**Finding:** The grass has eroded within the impact area of the equipment and may not provide the necessary impact attenuating properties for the equipment fall height; the surface may also be slippery in wet weather

**Action:** Reinstate the grass or provide an all weather surface

**5 - Very Low Risk (Finding 1)**

**Item:** Swings - 1 Bay 2 Seat (Flat)  
**Manufacturer:** Wicksteed Playgrounds

**Risk Level:** V - Very Low Risk  
**Surface:** Bonded Rubber Mulch



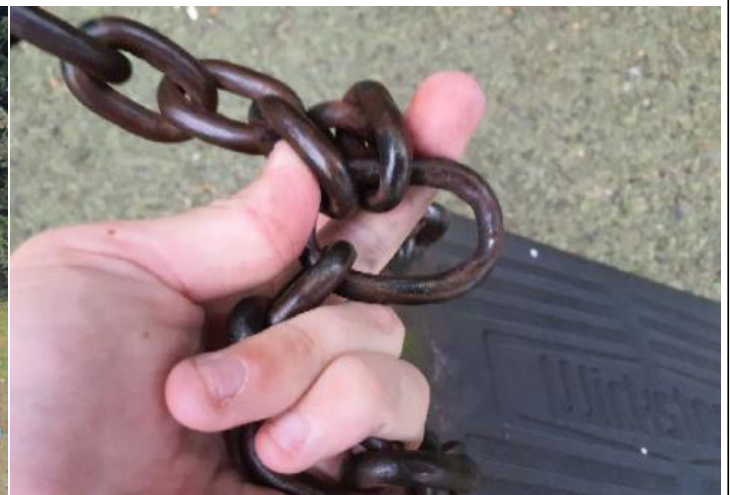
**Finding:** The chain openings are in excess of 8.6mm and do not meet the recommendations of BS EN 1176 Part 1

**Action:** Monitor - No remedial work recommended

**6 - Low Risk (Finding 2)**

**Item:** Swings - 1 Bay 2 Seat (Flat)  
**Manufacturer:** Wicksteed Playgrounds

**Risk Level:** L - Low Risk  
**Surface:** Bonded Rubber Mulch



**Finding:** There is some notable evidence of chain wear

**Action:** Monitor for any further deterioration and replace when 40% worn



 12 - Moderate Risk (Finding 3)

**Item:** Swings - 1 Bay 2 Seat (Flat)  
**Manufacturer:** Wicksteed Playgrounds

**Risk Level:** M - Moderate Risk  
**Surface:** Bonded Rubber Mulch



**Finding:** The chain links are worn in excess of 40% and require renewing

**Action:** Replace worn chains

**i** 8 - Low Risk (Finding 4)

**Item:** Swings - 1 Bay 2 Seat (Flat)  
**Manufacturer:** Wicksteed Playgrounds

**Risk Level:** L - Low Risk  
**Surface:** Bonded Rubber Mulch



**Finding:** The bushes are worn or missing

**Action:** Replace worn or missing bushes

**i** 6 - Low Risk (Finding 5)

**Item:** Swings - 1 Bay 2 Seat (Flat)  
**Manufacturer:** Wicksteed Playgrounds

**Risk Level:** L - Low Risk  
**Surface:** Bonded Rubber Mulch



**Finding:** There is some wear to the shackles

**Action:** Monitor for any further deterioration and replace when 40% worn

**i** 4 - Very Low Risk (Finding 6)

**Item:** Swings - 1 Bay 2 Seat (Flat)  
**Manufacturer:** Wicksteed Playgrounds

**Risk Level:** V - Very Low Risk  
**Surface:** Bonded Rubber Mulch



**Finding:** The seats are too close to each other as defined in BS EN 1176 Part 2; this is a low risk failure and no remedial action is required  
**Action:** Monitor - No remedial work recommended

**i** 5 - Very Low Risk (Finding 7)

**Item:** Swings - 1 Bay 2 Seat (Flat)  
**Manufacturer:** Wicksteed Playgrounds

**Risk Level:** V - Very Low Risk  
**Surface:** Bonded Rubber Mulch



**Finding:** The surfacing dimensions are short and do not meet with the requirements of the current applicable standard  
**Action:** Monitor - no remedial action recommended

**i** 6 - Low Risk (Finding 1)

**Item:** Swings - 1 Bay 2 Seat (Flat)  
**Manufacturer:** Wicksteed Playgrounds

**Risk Level:** L - Low Risk  
**Surface:** Bonded Rubber Mulch



**Finding:** The seat has minor damage or wear

**Action:** Monitor for any further deterioration and replace as required

**i** 8 - Low Risk (Finding 1)

**Item:** Rocking Equipment - Spring See-Saw  
**Manufacturer:** Not Identified

**Risk Level:** L - Low Risk  
**Surface:** Grass Matrix Tiles



**Finding:** There is moderate damage to the surface

**Action:** Repair the damaged areas of surfacing

**i** 6 - Low Risk (Finding 2)

**Item:** Rocking Equipment - Spring See-Saw  
**Manufacturer:** Not Identified

**Risk Level:** L - Low Risk  
**Surface:** Grass Matrix Tiles



**Finding:** There are gaps opening between the grass mat tiles

**Action:** Provide additional ties or secure / reinstate surface tiles

**i** 6 - Low Risk (Finding 3)

**Item:** Rocking Equipment - Spring See-Saw  
**Manufacturer:** Not Identified

**Risk Level:** L - Low Risk  
**Surface:** Grass Matrix Tiles



**Finding:** There is movement within the pivot point

**Action:** Monitor for any further deterioration and repair as required

**i** 6 - Low Risk (Finding 1)

<b>Item:</b>	Ancillary Items - Bench	<b>Risk Level:</b>	L - Low Risk
<b>Manufacturer:</b>	Not Identified	<b>Surface:</b>	Grass



**Finding:** There is some damage to the item  
**Action:** Monitor for any further deterioration and repair as required

**i** 6 - Low Risk (Finding 1)

<b>Item:</b>	Ancillary Items - Picnic Table	<b>Risk Level:</b>	L - Low Risk
<b>Manufacturer:</b>	Not Identified	<b>Surface:</b>	Grass



**Finding:** The surface has eroded in some areas and may be slippery in wet conditions  
**Action:** Reinstate the surface

**i** 4 - Very Low Risk (Finding 2)

**Item:** Ancillary Items - Picnic Table  
**Manufacturer:** Not Identified  
**Risk Level:** V - Very Low Risk  
**Surface:** Grass



**Finding:** The slats are distorted  
**Action:** Monitor for any further deterioration and replace as required

**i** 6 - Low Risk (Finding 3)

**Item:** Ancillary Items - Picnic Table  
**Manufacturer:** Not Identified  
**Risk Level:** L - Low Risk  
**Surface:** Grass



**Finding:** There is some damage to the item  
**Action:** Monitor for any further deterioration and repair as required

**i** 8 - Low Risk (Finding 4)

**Item:** Ancillary Items - Picnic Table  
**Manufacturer:** Not Identified

**Risk Level:** L - Low Risk  
**Surface:** Grass



**Finding:** There are projecting bolt thread(s) present

**Action:** Remove excess thread length and deburr or provide cap

**i** 6 - Low Risk (Finding 1)

**Item:** Activity Equipment - Climbing Frame  
**Manufacturer:** Wicksteed Playgrounds

**Risk Level:** L - Low Risk  
**Surface:** Bonded Rubber Mulch



**Finding:** The paint is flaking off the metalwork

**Action:** Rub down and re-paint



**i** 4 - Very Low Risk (Finding 1)

**Item:** Activity Equipment - Multi Play (Junior)  
**Manufacturer:** Hags

**Risk Level:** V - Very Low Risk  
**Surface:** Bonded Rubber Mulch



**Finding:** The item has been installed marginally too high which has resulted in the platform height being in excess of 600mm (610 mm) and technically, the height of the barriers are now insufficient to meet the requirements of BS EN 1176 Part 1. This is however a very low risk technicality and no remedial action is recommended as it has not affected the risk assessment of the item

**Action:** No action given the risk assessment

**i** 6 - Low Risk (Finding 1)

**Item:** Rocking Equipment - Spring Elephant  
**Manufacturer:** Wicksteed Playgrounds

**Risk Level:** L - Low Risk  
**Surface:** Bonded Rubber Mulch



**Finding:** The end of handgrips and/or footrests have a cross section of less than 15cm<sup>2</sup> and fail to meet the requirements of BS EN 1176 Part 6  
**Action:** Monitor - No remedial work recommended

**i** 6 - Low Risk (Finding 2)

**Item:** Rocking Equipment - Spring Elephant  
**Manufacturer:** Wicksteed Playgrounds

**Risk Level:** L - Low Risk  
**Surface:** Bonded Rubber Mulch



**Finding:** There is some damage to the item

**Action:** Monitor for any further deterioration and repair as required

**i** 6 - Low Risk (Finding 3)

**Item:** Rocking Equipment - Spring Elephant  
**Manufacturer:** Wicksteed Playgrounds

**Risk Level:** L - Low Risk  
**Surface:** Bonded Rubber Mulch



**Finding:** The paintwork on this item has been damaged or worn exposing the metal underneath which is rusting / corroding

**Action:** Treat affected areas and repaint

**i** 6 - Low Risk (Finding 1)

**Item:** Swings - 2 Bay (2 Flat, 2 Cradle)  
**Manufacturer:** Wicksteed Playgrounds

**Risk Level:** L - Low Risk  
**Surface:** Bonded Rubber Mulch



**Finding:** The paintwork on this item has been damaged or worn exposing the metal underneath which is rusting / corroding

**Action:** Treat affected areas and repaint

**i** 10 - Low Risk (Finding 2)

**Item:** Swings - 2 Bay (2 Flat, 2 Cradle)  
**Manufacturer:** Wicksteed Playgrounds

**Risk Level:** L - Low Risk  
**Surface:** Bonded Rubber Mulch



**Finding:** Parts of the steel on this item have corroded excessively and the metal has perforated in places

**Action:** Ensure all affected areas are treated and repaired

**i** 4 - Very Low Risk (Finding 3)

**Item:** Swings - 2 Bay (2 Flat, 2 Cradle)  
**Manufacturer:** Wicksteed Playgrounds

**Risk Level:** V - Very Low Risk  
**Surface:** Bonded Rubber Mulch



**Finding:** The bushes are showing signs of wear

**Action:** Monitor for any further deterioration and replace as required

**8 - Low Risk (Finding 4)**

**Item:** Swings - 2 Bay (2 Flat, 2 Cradle)  
**Manufacturer:** Wicksteed Playgrounds

**Risk Level:** L - Low Risk  
**Surface:** Bonded Rubber Mulch



**Finding:** The seat clearance from finished surface level to the underside of the seat is too low and does not meet the requirements of BS EN 1176 Part 2 (350mm minimum clearance required)

**Action:** Adjust seat height/s (400mm-500mm is recommended)

**6 - Low Risk (Finding 1)**

**Item:** Rotor Play - Dish Roundabout  
**Manufacturer:** Hags

**Risk Level:** L - Low Risk  
**Surface:** Bonded Rubber Mulch



**Finding:** A number of fixing(s) have worked loose

**Action:** Secure all loose fixings

**i** 4 - Very Low Risk (Finding 1)

**Item:** Other - Cable Runway  
**Manufacturer:** Hags

**Risk Level:** V - Very Low Risk  
**Surface:** Grass Matrix Tiles



**Finding:** The installation of the cable end does not appear to have been installed in accordance with the manufacturers recommendations

**Action:** Refer to manufacturer

**i** 6 - Low Risk (Finding 1)

**Item:** Ancillary Items - Sign  
**Manufacturer:** Owner/Operator

**Risk Level:** L - Low Risk  
**Surface:** N/A



**Finding:** The plywood has delaminated in some places

**Action:** Remove all rough or splintered edges.

**i** 8 - Low Risk (Finding 2)

**Item:** Ancillary Items - Sign  
**Manufacturer:** Owner/Operator

**Risk Level:** L - Low Risk  
**Surface:** N/A



**Finding:** There are projecting bolt thread(s) present

**Action:** Remove excess thread length and deburr or provide cap

**i** 8 - Low Risk (Finding 3)

**Item:** Ancillary Items - Sign  
**Manufacturer:** Owner/Operator

**Risk Level:** L - Low Risk  
**Surface:** N/A



**Finding:** There is or are fixings missing on the item

**Action:** Replace all missing fixings

**i** 10 - Low Risk (Finding 1)

**Item:** Gates - Gate - Self Closing  
**Manufacturer:** Not Identified

**Risk Level:** L - Low Risk  
**Surface:** Bitmac



**Finding:** There are openings that are less than 12mm that could trap or crush fingers

**Action:** Provide a 12mm gap throughout full range of motion at both sides of gate

**i** 8 - Low Risk (Finding 2)

**Item:** Gates - Gate - Self Closing  
**Manufacturer:** Not Identified

**Risk Level:** L - Low Risk  
**Surface:** Bitmac



**Finding:** The gate is closing too quickly (less than 4 seconds)

**Action:** Take corrective action to ensure that the gate closes in 4-8 seconds



**6 - Low Risk (Finding 3)**

**Item:** Gates - Gate - Self Closing  
**Manufacturer:** Not Identified  
**Risk Level:** L - Low Risk  
**Surface:** Bitmac



**Finding:** The rubber buffer is missing from the latch plate  
**Action:** Replace rubber buffer

**5 - Very Low Risk (Finding 4)**

**Item:** Gates - Gate - Self Closing  
**Manufacturer:** Not Identified  
**Risk Level:** V - Very Low Risk  
**Surface:** Bitmac



**Finding:** The gate is not operating correctly  
**Action:** Take effective action to ensure the gate closes between 4 and 8 seconds

**i** 6 - Low Risk (Finding 5)

**Item:** Gates - Gate - Self Closing  
**Manufacturer:** Not Identified  
**Risk Level:** L - Low Risk  
**Surface:** Bitmac



**Finding:** There is surface corrosion / rust present on the item

**Action:** Consider treating the item

**i** 6 - Low Risk (Finding 6)

**Item:** Gates - Gate - Self Closing  
**Manufacturer:** Not Identified  
**Risk Level:** L - Low Risk  
**Surface:** Bitmac



**Finding:** The gate spring cover has slipped out of position

**Action:** Replace the spring cover in the correct position

**i** 4 - Very Low Risk (Finding 7)

**Item:** Gates - Gate - Self Closing  
**Manufacturer:** Not Identified  
**Risk Level:** V - Very Low Risk  
**Surface:** Bitmac



**Finding:** There is some minor damage to the surface  
**Action:** Monitor for any further deterioration and repair as required

**i** 0 - Risk Assessment not Undertaken (Finding 1)

**Item:** Gates - Gate - Maintenance  
**Manufacturer:** Not Identified  
**Risk Level:** N - Risk Assessment not Undertaken  
**Surface:** Grass



**Finding:** The maintenance gate was correctly padlocked at the time of inspection, however this means that the inspector was unable to fully assess the gate  
**Action:** Ensure that there are 12mm gaps throughout the full range of motion on gate/s and between leaves where relevant

**i** 6 - Low Risk (Finding 2)

**Item:** Gates - Gate - Maintenance  
**Manufacturer:** Not Identified

**Risk Level:** L - Low Risk  
**Surface:** Grass



**Finding:** There is some damage to the item

**Action:** Monitor for any further deterioration and repair as required

**i** 8 - Low Risk (Finding 1)

**Item:** Fences - Fence - Bow Top  
**Manufacturer:** Not Identified

**Risk Level:** L - Low Risk  
**Surface:** Grass



**Finding:** There is or are fixings missing on the item

**Action:** Replace all missing fixings

**i** 6 - Low Risk (Finding 2)

**Item:** Fences - Fence - Bow Top  
**Manufacturer:** Not Identified  
**Risk Level:** L - Low Risk  
**Surface:** Grass



**Finding:** There is some damage to the fence sections  
**Action:** Monitor for any further deterioration and repair as required

**i** 6 - Low Risk (Finding 3)

**Item:** Fences - Fence - Bow Top  
**Manufacturer:** Not Identified  
**Risk Level:** L - Low Risk  
**Surface:** Grass



**Finding:** There is surface corrosion / rust present on the item  
**Action:** Consider treating the item

**i** 8 - Low Risk (Finding 4)

**Item:** Fences - Fence - Bow Top  
**Manufacturer:** Not Identified

**Risk Level:** L - Low Risk  
**Surface:** Grass



**Finding:** There are projecting bolt thread(s) present

**Action:** Remove excess thread length and deburr or provide cap

**i** 6 - Low Risk (Finding 1)

**Item:** Ancillary Items - Litter Bin  
**Manufacturer:** Not Identified

**Risk Level:** L - Low Risk  
**Surface:** N/A



**Finding:** The liner of the litter bin is not secured

**Action:** Ensure the lid/door is kept locked and the liner secured

**i** 6 - Low Risk (Finding 1)

**Item:** Wheeled Sports - Quarter Pipe  
**Manufacturer:** Not Identified

**Risk Level:** L - Low Risk  
**Surface:** Bitmac



**Finding:** The height of the barrier is less than 1200mm at a distance exceeding 300mm from the front of the barrier and fails the requirements of BS EN 14974

**Action:** Monitor - No remedial work recommended

**i** 0 - Risk Assessment not Undertaken (Finding 2)

**Item:** Wheeled Sports - Quarter Pipe  
**Manufacturer:** Not Identified

**Risk Level:** N - Risk Assessment not Undertaken  
**Surface:** Bitmac



**Finding:** There is offensive graffiti present

**Action:** Remove as soon as practicable



**i** 6 - Low Risk (Finding 3)

**Item:** Wheeled Sports - Quarter Pipe  
**Manufacturer:** Not Identified

**Risk Level:** L - Low Risk  
**Surface:** Bitmac



**Finding:** The riding surface of the ramp has some damage apparent

**Action:** Monitor for any further deterioration and repair as required

**i** 8 - Low Risk (Finding 4)

**Item:** Wheeled Sports - Quarter Pipe  
**Manufacturer:** Not Identified

**Risk Level:** L - Low Risk  
**Surface:** Bitmac



**Finding:** There is algae or moss on the surface of the equipment

**Action:** Clean and treat appropriately

**i 8 - Low Risk (Finding 5)**

**Item:** Wheeled Sports - Quarter Pipe  
**Manufacturer:** Not Identified  
**Risk Level:** L - Low Risk  
**Surface:** Bitmac



**Finding:** There are trip hazards at the edges of the surface  
**Action:** Reinstate surrounding surface levels to remove the trip points

**i 0 - Risk Assessment not Undertaken (Finding 1)**

**Item:** Wheeled Sports - Start Ramp  
**Manufacturer:** StreetSkapes  
**Risk Level:** N - Risk Assessment not Undertaken  
**Surface:** Bitmac



**Finding:** There is offensive graffiti present  
**Action:** Remove as soon as practicable

**i** 6 - Low Risk (Finding 2)

**Item:** Wheeled Sports - Start Ramp  
**Manufacturer:** StreetSkapes

**Risk Level:** L - Low Risk  
**Surface:** Bitmac



**Finding:** The riding surface of the ramp has some damage apparent

**Action:** Monitor for any further deterioration and repair as required

**i** 10 - Low Risk (Finding 3)

**Item:** Wheeled Sports - Start Ramp  
**Manufacturer:** StreetSkapes

**Risk Level:** L - Low Risk  
**Surface:** Bitmac



**Finding:** The riding surface of the ramp is damaged

**Action:** Repair all damaged surfaces

**i** 8 - Low Risk (Finding 4)

**Item:** Wheeled Sports - Start Ramp  
**Manufacturer:** StreetSkapes

**Risk Level:** L - Low Risk  
**Surface:** Bitmac



**Finding:** The kicker plate is loose

**Action:** Secure

**i** 6 - Low Risk (Finding 5)

**Item:** Wheeled Sports - Start Ramp  
**Manufacturer:** StreetSkapes

**Risk Level:** L - Low Risk  
**Surface:** Bitmac



**Finding:** The height of the barrier is less than 1200mm at a distance exceeding 300mm from the front of a barrier and fails the requirements of BS EN 14974

**Action:** Monitor - No remedial work recommended

**i** 4 - Very Low Risk (Finding 6)

**Item:** Wheeled Sports - Start Ramp  
**Manufacturer:** StreetSkapes

**Risk Level:** V - Very Low Risk  
**Surface:** Bitmac



**Finding:** There is paint on the ramp

**Action:** Remove

**i** 8 - Low Risk (Finding 7)

**Item:** Wheeled Sports - Start Ramp  
**Manufacturer:** StreetSkapes

**Risk Level:** L - Low Risk  
**Surface:** Bitmac



**Finding:** Joints between the riding surfaces should not be greater than 5mm to meet the requirements of BS EN 14974

**Action:** Take corrective action to ensure that the gaps between the joints do not exceed 5mm

**i** 8 - Low Risk (Finding 8)

**Item:** Wheeled Sports - Start Ramp  
**Manufacturer:** StreetSkapes

**Risk Level:** L - Low Risk  
**Surface:** Bitmac



**Finding:** There is or are fixings missing on the item

**Action:** Replace all missing fixings

**i** 10 - Low Risk (Finding 1)

**Item:** Wheeled Sports - Fun Box  
**Manufacturer:** Streetscape Products

**Risk Level:** L - Low Risk  
**Surface:** Bitmac



**Finding:** The riding surface of the ramp is damaged

**Action:** Repair all damaged surfaces

**i** 8 - Low Risk (Finding 2)

**Item:** Wheeled Sports - Fun Box  
**Manufacturer:** Streetscape Products

**Risk Level:** L - Low Risk  
**Surface:** Bitmac



**Finding:** The kicker plate has sunk into the surface leaving a vertical height differences in excess of 3mm in contravention of BS EN 14974  
**Action:** Reinstate the surface to level



**i** 8 - Low Risk (Finding 3)

**Item:** Wheeled Sports - Fun Box  
**Manufacturer:** Streetscape Products

**Risk Level:** L - Low Risk  
**Surface:** Bitmac



**Finding:** There is or are fixings missing on the item

**Action:** Replace all missing fixings

**i** 8 - Low Risk (Finding 4)

**Item:** Wheeled Sports - Fun Box  
**Manufacturer:** Streetscape Products

**Risk Level:** L - Low Risk  
**Surface:** Bitmac



**Finding:** There is algae or moss on the surface of the equipment

**Action:** Clean and treat appropriately

**i** 5 - Very Low Risk (Finding 5)

**Item:** Wheeled Sports - Fun Box  
**Manufacturer:** Streetscape Products

**Risk Level:** V - Very Low Risk  
**Surface:** Bitmac



**Finding:** The item has insufficient safety zone allowed as required by BS EN 14974. This should consist of a bound uniform material and extend at least 2.0 metres on most items (1.50m for ledges, curbs and rails installed adjacent to each other)

**Action:** Monitor - No remedial work recommended

**i** 8 - Low Risk (Finding 6)

**Item:** Wheeled Sports - Fun Box  
**Manufacturer:** Streetscape Products

**Risk Level:** L - Low Risk  
**Surface:** Bitmac



**Finding:** There is or are fixings missing on the item

**Action:** Replace all missing fixings

**i** 8 - Low Risk (Finding 1)

**Item:** Wheeled Sports - Start Ramp  
**Manufacturer:** StreetSkapes

**Risk Level:** L - Low Risk  
**Surface:** Bitmac



**Finding:** There is or are fixings missing on the item

**Action:** Replace all missing fixings

**i** 10 - Low Risk (Finding 2)

**Item:** Wheeled Sports - Start Ramp  
**Manufacturer:** StreetSkapes

**Risk Level:** L - Low Risk  
**Surface:** Bitmac



**Finding:** The riding surface of the ramp is damaged

**Action:** Repair all damaged surfaces

**i** 8 - Low Risk (Finding 3)

**Item:** Wheeled Sports - Start Ramp  
**Manufacturer:** StreetSkapes

**Risk Level:** L - Low Risk  
**Surface:** Bitmac



**Finding:** The kicker plate has sunk into the surface creating a height differences exceeding 3mm in contravention of BS EN 14974

**Action:** Reinstate the surface to level

**i** 6 - Low Risk (Finding 4)

**Item:** Wheeled Sports - Start Ramp  
**Manufacturer:** StreetSkapes

**Risk Level:** L - Low Risk  
**Surface:** Bitmac



**Finding:** The height of the barrier is less than 1200mm at a distance exceeding 300mm from the front of the barrier and fails the requirements of BS EN 14974

**Action:** Monitor - No remedial work recommended

**i** 6 - Low Risk (Finding 1)

**Item:** Wheeled Sports - Quarter Pipe  
**Manufacturer:** StreetSkapes

**Risk Level:** L - Low Risk  
**Surface:** Bitmac



**Finding:** The riding surface of the ramp has some damage apparent

**Action:** Monitor for any further deterioration and repair as required

**i** 6 - Low Risk (Finding 2)

**Item:** Wheeled Sports - Quarter Pipe  
**Manufacturer:** StreetSkapes

**Risk Level:** L - Low Risk  
**Surface:** Bitmac



**Finding:** The kicker plate has sunk into the surface creating a height difference exceeding 3mm in contravention of the requirements of BS EN 14974

**Action:** Reinstate the surface to level

**i** 8 - Low Risk (Finding 3)

**Item:** Wheeled Sports - Quarter Pipe  
**Manufacturer:** StreetSkapes

**Risk Level:** L - Low Risk  
**Surface:** Bitmac



**Finding:** There is algae or moss on the surface of the equipment

**Action:** Clean and treat appropriately

**i** 6 - Low Risk (Finding 4)

**Item:** Wheeled Sports - Quarter Pipe  
**Manufacturer:** StreetSkapes

**Risk Level:** L - Low Risk  
**Surface:** Bitmac



**Finding:** The identification label is damaged

**Action:** Remove the label



**6 - Low Risk (Finding 5)**

**Item:** Wheeled Sports - Quarter Pipe  
**Manufacturer:** StreetSkapes

**Risk Level:** L - Low Risk  
**Surface:** Bitmac



**Finding:** The height of the barrier is less than 1200mm at a distance exceeding 300mm from the front of the barrier and fails the requirements of BS EN 14974

**Action:** Monitor - No remedial work recommended

**9 - Low Risk (Finding 1)**

**Item:** Wheeled Sports - Half Pipe  
**Manufacturer:** StreetSkapes

**Risk Level:** L - Low Risk  
**Surface:** Mixed Surface



**Finding:** There are significant gaps (over 30mm) between the surface and the edging or between the joints in the surface; these are large enough for a small foot to enter

**Action:** Repair surfacing

**i** 6 - Low Risk (Finding 2)

**Item:** Wheeled Sports - Half Pipe  
**Manufacturer:** StreetSkapes

**Risk Level:** L - Low Risk  
**Surface:** Mixed Surface



**Finding:** There is weed / vegetation growth on, between, or around the edges of the surfacing  
**Action:** Remove weed / vegetation growth

**i** 8 - Low Risk (Finding 3)

**Item:** Wheeled Sports - Half Pipe  
**Manufacturer:** StreetSkapes

**Risk Level:** L - Low Risk  
**Surface:** Mixed Surface



**Finding:** There is moderate damage to the surface

**Action:** Repair the damaged areas of surfacing

**i** 8 - Low Risk (Finding 4)

**Item:** Wheeled Sports - Half Pipe  
**Manufacturer:** StreetSkapes

**Risk Level:** L - Low Risk  
**Surface:** Mixed Surface



**Finding:** The weld(s) on this item have failed

**Action:** Repair item

**i** 6 - Low Risk (Finding 5)

**Item:** Wheeled Sports - Half Pipe  
**Manufacturer:** StreetSkapes

**Risk Level:** L - Low Risk  
**Surface:** Mixed Surface



**Finding:** There are post / end caps missing from the item

**Action:** Replace missing post caps

**i** 6 - Low Risk (Finding 6)

**Item:** Wheeled Sports - Half Pipe  
**Manufacturer:** StreetSkapes

**Risk Level:** L - Low Risk  
**Surface:** Mixed Surface



**Finding:** There is surface corrosion / rust present on the item

**Action:** Consider treating the item

**i** 8 - Low Risk (Finding 7)

**Item:** Wheeled Sports - Half Pipe  
**Manufacturer:** StreetSkapes

**Risk Level:** L - Low Risk  
**Surface:** Mixed Surface



**Finding:** There is or are fixings missing on the item

**Action:** Replace all missing fixings

**8 - Low Risk (Finding 8)**

**Item:** Wheeled Sports - Half Pipe  
**Manufacturer:** StreetSkapes

**Risk Level:** L - Low Risk  
**Surface:** Mixed Surface



**Finding:** There are projecting bolt thread(s) present

**Action:** Remove excess thread length and deburr or provide cap

**6 - Low Risk (Finding 9)**

**Item:** Wheeled Sports - Half Pipe  
**Manufacturer:** StreetSkapes

**Risk Level:** L - Low Risk  
**Surface:** Mixed Surface



**Finding:** The height of the barrier is less than 1200mm and fails the requirements of BS EN 14974

**Action:** Monitor - No remedial work recommended

**i** 8 - Low Risk (Finding 10)

**Item:** Wheeled Sports - Half Pipe  
**Manufacturer:** StreetSkapes

**Risk Level:** L - Low Risk  
**Surface:** Mixed Surface



**Finding:** There is algae or moss on the surface of the equipment

**Action:** Clean and treat appropriately

**i** 6 - Low Risk (Finding 11)

**Item:** Wheeled Sports - Half Pipe  
**Manufacturer:** StreetSkapes

**Risk Level:** L - Low Risk  
**Surface:** Mixed Surface



**Finding:** The riding surface of the ramp has some damage apparent

**Action:** Monitor for any further deterioration and repair as required



**i** 6 - Low Risk (Finding 12)

**Item:** Wheeled Sports - Half Pipe  
**Manufacturer:** StreetSkapes

**Risk Level:** L - Low Risk  
**Surface:** Mixed Surface



**Finding:** The plywood has delaminated in some places

**Action:** Remove all rough or splintered edges.

**i** 8 - Low Risk (Finding 13)

**Item:** Wheeled Sports - Half Pipe  
**Manufacturer:** StreetSkapes

**Risk Level:** L - Low Risk  
**Surface:** Mixed Surface



**Finding:** There is a change in the level of the rolling surface in excess of 3mm and the item fails the requirements of BS EN 14974 Clause 5.1.2.3  
**Action:** Monitor - No remedial work recommended

**i** 8 - Low Risk (Finding 1)

**Item:** Gates - Gate - Self Closing  
**Manufacturer:** Not Identified

**Risk Level:** L - Low Risk  
**Surface:** Grass



**Finding:** There are trip hazards at the edges of the surface  
**Action:** Reinstate surrounding surface levels to remove the trip points

**i** 5 - Very Low Risk (Finding 2)

**Item:** Gates - Gate - Self Closing  
**Manufacturer:** Not Identified

**Risk Level:** V - Very Low Risk  
**Surface:** Grass



**Finding:** The gate is not operating correctly

**Action:** Take effective action to ensure the gate closes between 4 and 8 seconds

**i** 8 - Low Risk (Finding 3)

**Item:** Gates - Gate - Self Closing  
**Manufacturer:** Not Identified

**Risk Level:** L - Low Risk  
**Surface:** Grass



**Finding:** The weld(s) on this item have failed

**Action:** Repair item

**i** 8 - Low Risk (Finding 4)

**Item:** Gates - Gate - Self Closing  
**Manufacturer:** Not Identified

**Risk Level:** L - Low Risk  
**Surface:** Grass



**Finding:** The gate passes the slamming post

**Action:** Adjust gate

**i** 6 - Low Risk (Finding 5)

**Item:** Gates - Gate - Self Closing  
**Manufacturer:** Not Identified

**Risk Level:** L - Low Risk  
**Surface:** Grass



**Finding:** There is some damage to the item

**Action:** Monitor for any further deterioration and repair as required

**i** 6 - Low Risk (Finding 1)

**Item:** Gates - Maintenance Gate  
**Manufacturer:** Not Identified

**Risk Level:** L - Low Risk  
**Surface:** Grass



**Finding:** The gate is missing

**Action:** Replace the gate

**i** 6 - Low Risk (Finding 1)

**Item:** Fences - Fence - Bow Top  
**Manufacturer:** Not Identified

**Risk Level:** L - Low Risk  
**Surface:** Grass




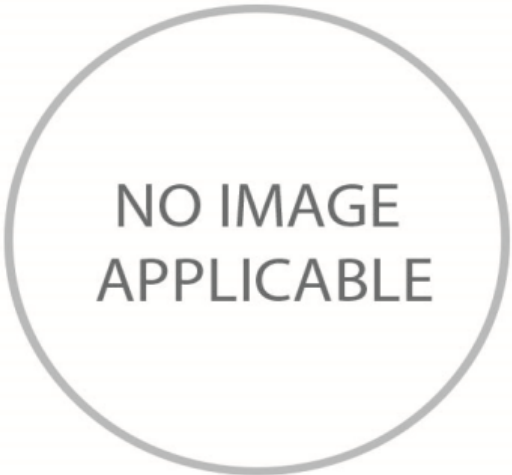
**Finding:** There is some damage to the fence sections

**Action:** Monitor for any further deterioration and repair as required

**10 - Low Risk (Finding 1)**

<b>Item:</b>	Wheeled Sports - BMX Track	<b>Risk Level:</b>	L - Low Risk
<b>Manufacturer:</b>	Not Identified	<b>Surface:</b>	Grass





**Finding:** BMX tracks are not currently covered by any British or European Standard; comments made in the report are based on the application of our knowledge and understanding of the Wheeled Sports Standard (BS EN 14974) and their maintenance and the area has been risk assessed accordingly

**Action:** Monitor use and review risk assessment regularly

**6 - Low Risk (Finding 2)**

<b>Item:</b>	Wheeled Sports - BMX Track	<b>Risk Level:</b>	L - Low Risk
<b>Manufacturer:</b>	Not Identified	<b>Surface:</b>	Grass




**Finding:** There is weed / vegetation growth on, between, or around the edges of the surfacing

**Action:** Remove weed / vegetation growth

**i** 6 - Low Risk (Finding 3)

**Item:** Wheeled Sports - BMX Track  
**Manufacturer:** Not Identified

**Risk Level:** L - Low Risk  
**Surface:** Grass



**Finding:** The grass is overgrown within the play area and may hide hazards

**Action:** Reduce the length of grass to an acceptable height and maintain

**i** 6 - Low Risk (Finding 1)

**Item:** Multi Use Games Area - Multi Use Games Area (MUGA)  
**Manufacturer:** Not Identified

**Risk Level:** L - Low Risk  
**Surface:** Carpet System



**Finding:** There are a number of redundant cable ties attached to the gate

**Action:** Remove redundant cable ties



**i** 8 - Low Risk (Finding 2)

**Item:** Multi Use Games Area - Multi Use Games Area (MUGA) **Risk Level:** L - Low Risk  
**Manufacturer:** Not Identified **Surface:** Carpet System



**Finding:** There is or are numerous fixings missing on the clamping rails

**Action:** Replace all missing fixings

**i** 5 - Very Low Risk (Finding 3)

**Item:** Multi Use Games Area - Multi Use Games Area (MUGA) **Risk Level:** V - Very Low Risk  
**Manufacturer:** Not Identified **Surface:** Carpet System



**Finding:** There is/are finger entrapments in the frame due to missing fixings and the item fails to meet the requirements of BS EN 15312 Clause 4.4.2.2 Entrapment of fingers

**Action:** Provide missing fixings to remove entrapment

**i** 5 - Very Low Risk (Finding 4)

**Item:** Multi Use Games Area - Multi Use Games Area (MUGA)  
**Manufacturer:** Not Identified

**Risk Level:** V - Very Low Risk  
**Surface:** Carpet System



**Finding:** There is/are finger entrapments in the frame and the item fails to meet the requirements of BS EN 15312 Clause 4.4.2.2 Entrapment of fingers

**Action:** Monitor - No remedial work recommended

**!** 12 - Moderate Risk (Finding 5)

**Item:** Multi Use Games Area - Multi Use Games Area (MUGA)  
**Manufacturer:** Not Identified

**Risk Level:** M - Moderate Risk  
**Surface:** Carpet System



**Finding:** A panel is damaged

**Action:** Repair or replace as required

**i** 8 - Low Risk (Finding 6)

<b>Item:</b>	Multi Use Games Area - Multi Use Games Area (MUGA)	<b>Risk Level:</b>	L - Low Risk
<b>Manufacturer:</b>	Not Identified	<b>Surface:</b>	Carpet System



**Finding:** There is some damage to the goal panel

**Action:** Repair or replace as required

**i** 6 - Low Risk (Finding 7)

<b>Item:</b>	Multi Use Games Area - Multi Use Games Area (MUGA)	<b>Risk Level:</b>	L - Low Risk
<b>Manufacturer:</b>	Not Identified	<b>Surface:</b>	Carpet System



**Finding:** There is a redundant sign on the muga

**Action:** Remove if no longer required

**i** 8 - Low Risk (Finding 8)

<b>Item:</b>	Multi Use Games Area - Multi Use Games Area (MUGA)	<b>Risk Level:</b>	L - Low Risk
<b>Manufacturer:</b>	Not Identified	<b>Surface:</b>	Carpet System

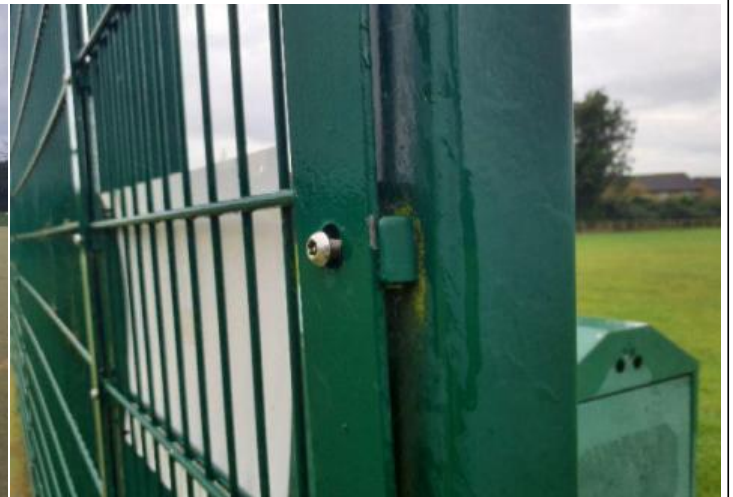


**Finding:** There is or are fixings missing on the item

**Action:** Replace all missing fixings

**i** 6 - Low Risk (Finding 9)

<b>Item:</b>	Multi Use Games Area - Multi Use Games Area (MUGA)	<b>Risk Level:</b>	L - Low Risk
<b>Manufacturer:</b>	Not Identified	<b>Surface:</b>	Carpet System



**Finding:** A number of fixing(s) have worked loose on the clamping rails

**Action:** Secure all loose fixings

**i** 8 - Low Risk (Finding 10)

<b>Item:</b>	Multi Use Games Area - Multi Use Games Area (MUGA)	<b>Risk Level:</b>	L - Low Risk
<b>Manufacturer:</b>	Not Identified	<b>Surface:</b>	Carpet System



**Finding:** There is algae or moss growth on the surface resulting in slippery conditions

**Action:** Clean and treat appropriately

**i** 8 - Low Risk (Finding 11)

<b>Item:</b>	Multi Use Games Area - Multi Use Games Area (MUGA)	<b>Risk Level:</b>	L - Low Risk
<b>Manufacturer:</b>	Not Identified	<b>Surface:</b>	Carpet System



**Finding:** There is moderate damage to the surface

**Action:** Repair the damaged areas of surfacing

**i** 10 - Low Risk (Finding 12)

**Item:** Multi Use Games Area - Multi Use Games Area (MUGA)  
**Manufacturer:** Not Identified

**Risk Level:** L - Low Risk  
**Surface:** Carpet System



**Finding:** Socket covers are missing creating a foot entrapment

**Action:** Replace the cover

**i** 8 - Low Risk (Finding 13)

<b>Item:</b>	Multi Use Games Area - Multi Use Games Area (MUGA)	<b>Risk Level:</b>	L - Low Risk
<b>Manufacturer:</b>	Not Identified	<b>Surface:</b>	Carpet System



**Finding:** There is moderate damage to the goal panel and a wooden board has been used as a temporary repair  
**Action:** Replace panel

**i** 6 - Low Risk (Finding 14)

<b>Item:</b>	Multi Use Games Area - Multi Use Games Area (MUGA)	<b>Risk Level:</b>	L - Low Risk
<b>Manufacturer:</b>	Not Identified	<b>Surface:</b>	Carpet System



**Finding:** The paint is flaking off the metalwork  
**Action:** Rub down and re-paint



**i** 8 - Low Risk (Finding 15)

<b>Item:</b>	Multi Use Games Area - Multi Use Games Area (MUGA)	<b>Risk Level:</b>	L - Low Risk
<b>Manufacturer:</b>	Not Identified	<b>Surface:</b>	Carpet System



**Finding:** There is or are fixings missing on the item

**Action:** Replace all missing fixings

**i** 10 - Low Risk (Finding 16)

**Item:** Multi Use Games Area - Multi Use Games Area (MUGA)

**Risk Level:** L - Low Risk

**Manufacturer:** Not Identified

**Surface:** Carpet System



**Finding:** A panel is loose

**Action:** Secure

**i** 6 - Low Risk (Finding 1)

**Item:** Ancillary Items - Shelter  
**Manufacturer:** Caloo

**Risk Level:** L - Low Risk  
**Surface:** Grass Matrix Tiles



**Finding:** There is litter/debris in the area

**Action:** Remove litter/debris from the area and maintain

**i** 0 - Risk Assessment not Undertaken (Finding 1)

**Item:** Gates - Gate - Self Closing  
**Manufacturer:** Not Identified

**Risk Level:** N - Risk Assessment not Undertaken  
**Surface:** Grass



**Finding:** The gate/s was / were locked or secured at the time of the inspection and a full inspection could not be undertaken

**Action:** Complete inspection of gate/s when re-opened

**i** 6 - Low Risk (Finding 2)

**Item:** Gates - Gate - Self Closing  
**Manufacturer:** Not Identified

**Risk Level:** L - Low Risk  
**Surface:** Grass



**Finding:** The rubber buffer is missing from the latch plate

**Action:** Replace rubber buffer

**i** 8 - Low Risk (Finding 1)

**Item:** Fences - Fence - Bow Top  
**Manufacturer:** Not Identified

**Risk Level:** L - Low Risk  
**Surface:** Grass



**Finding:** There is or are fixings missing on the item

**Action:** Replace all missing fixings

**i** 8 - Low Risk (Finding 1)

**Item:** Outdoor Fitness Equipment - Shoulder Press  
**Manufacturer:** The Great Outdoor Gym Company

**Risk Level:** L - Low Risk  
**Surface:** Crushed Stone



**Finding:** There is or are fixings missing on the item

**Action:** Replace all missing fixings

**i** 8 - Low Risk (Finding 2)

**Item:** Outdoor Fitness Equipment - Shoulder Press  
**Manufacturer:** The Great Outdoor Gym Company

**Risk Level:** L - Low Risk  
**Surface:** Crushed Stone



**Finding:** One or more handgrip(s) are damaged or missing. **Action:** Replace missing or damaged handgrips

**6 - Low Risk (Finding 3)**

**Item:** Outdoor Fitness Equipment - Shoulder Press  
**Manufacturer:** The Great Outdoor Gym Company

**Risk Level:** L - Low Risk  
**Surface:** Crushed Stone



**Finding:** The paintwork on this item has been damaged or worn exposing the metal underneath which is rusting / corroding

**Action:** Treat affected areas and repaint

**8 - Low Risk (Finding 1)**

**Item:** Outdoor Fitness Equipment - Step Up Station  
**Manufacturer:** The Great Outdoor Gym Company

**Risk Level:** L - Low Risk  
**Surface:** Grass



**Finding:** There are obstacles located within the movement space of the item in contravention of the requirements of BS EN 16630

**Action:** Monitor - No remedial work recommended



**i** 8 - Low Risk (Finding 2)

**Item:** Outdoor Fitness Equipment - Step Up Station  
**Manufacturer:** The Great Outdoor Gym Company

**Risk Level:** L - Low Risk  
**Surface:** Grass



**Finding:** There are trip hazards at the edges of the surface

**Action:** Reinstate surrounding surface levels to remove the trip points

**i** 8 - Low Risk (Finding 1)

**Item:** Outdoor Fitness Equipment - Cross Trainer  
**Manufacturer:** The Great Outdoor Gym Company

**Risk Level:** L - Low Risk  
**Surface:** Crushed Stone



**Finding:** The tread surface does not have a 10mm high safeguard that extends around the front of the surface and at least 75% of the sides of the surface as required by BS EN 16630

**Action:** Monitor - No remedial work recommended

**i** 8 - Low Risk (Finding 2)

**Item:** Outdoor Fitness Equipment - Cross Trainer **Risk Level:** L - Low Risk  
**Manufacturer:** The Great Outdoor Gym Company **Surface:** Crushed Stone



**Finding:** There are gaps between 8 and 60mm creating a potential crush/shear point in contravention of the requirements of BS EN 16630 **Action:** Adjust the cover

**!** 15 - Moderate Risk (Finding 3)

**Item:** Outdoor Fitness Equipment - Cross Trainer **Risk Level:** M - Moderate Risk  
**Manufacturer:** The Great Outdoor Gym Company **Surface:** Crushed Stone



**Finding:** The cross trainer foot has become unattached **Action:** Repair item

**i** 8 - Low Risk (Finding 1)

**Item:** Outdoor Fitness Equipment - Cross Trainer **Risk Level:** L - Low Risk  
**Manufacturer:** The Great Outdoor Gym Company **Surface:** Crushed Stone



**Finding:** One or more handgrip(s) are damaged or missing. **Action:** Replace missing or damaged handgrips

**i** 8 - Low Risk (Finding 2)

**Item:** Outdoor Fitness Equipment - Cross Trainer **Risk Level:** L - Low Risk  
**Manufacturer:** The Great Outdoor Gym Company **Surface:** Crushed Stone



**Finding:** The tread surface does not have a 10mm high safeguard that extends around the front of the surface and at least 75% of the sides of the surface as required by BS EN 16630 **Action:** Monitor - No remedial work recommended

**i** 8 - Low Risk (Finding 3)

**Item:** Outdoor Fitness Equipment - Cross Trainer **Risk Level:** L - Low Risk  
**Manufacturer:** The Great Outdoor Gym Company **Surface:** Crushed Stone



**Finding:** There are gaps between 8 and 60mm creating a potential crush/shear point in contravention of the requirements of BS EN 16630

**Action:** Monitor - No remedial work recommended

**i** 6 - Low Risk (Finding 4)

**Item:** Outdoor Fitness Equipment - Cross Trainer **Risk Level:** L - Low Risk  
**Manufacturer:** The Great Outdoor Gym Company **Surface:** Crushed Stone



**Finding:** There is some damage to the sign

**Action:** Monitor for any further deterioration and repair as required

**i** 8 - Low Risk (Finding 1)

**Item:** Outdoor Fitness Equipment - Cycle  
**Manufacturer:** The Great Outdoor Gym Company

**Risk Level:** L - Low Risk  
**Surface:** Crushed Stone



**Finding:** There is some damage to the sign

**Action:** Replace sign

**i** 6 - Low Risk (Finding 2)

**Item:** Outdoor Fitness Equipment - Cycle  
**Manufacturer:** The Great Outdoor Gym Company

**Risk Level:** L - Low Risk  
**Surface:** Crushed Stone



**Finding:** The paintwork on this item has been damaged or worn exposing the metal underneath which is rusting / corroding

**Action:** Treat affected areas and repaint

**i** 6 - Low Risk (Finding 3)

**Item:** Outdoor Fitness Equipment - Cycle  
**Manufacturer:** The Great Outdoor Gym Company

**Risk Level:** L - Low Risk  
**Surface:** Crushed Stone



**Finding:** There is some damage to the handgrip

**Action:** Monitor for any further deterioration and repair as required

**i** 8 - Low Risk (Finding 4)

**Item:** Outdoor Fitness Equipment - Cycle  
**Manufacturer:** The Great Outdoor Gym Company

**Risk Level:** L - Low Risk  
**Surface:** Crushed Stone



**Finding:** There are obstacles located within the movement space of the item in contravention of the requirements of BS EN 16630

**Action:** Monitor - No remedial work recommended

**i** 6 - Low Risk (Finding 1)

**Item:** Outdoor Fitness Equipment - Hand Bike  
**Manufacturer:** The Great Outdoor Gym Company

**Risk Level:** L - Low Risk  
**Surface:** Crushed Stone



**Finding:** There is some damage to the handgrip

**Action:** Monitor for any further deterioration and repair as required

**i** 6 - Low Risk (Finding 2)

**Item:** Outdoor Fitness Equipment - Hand Bike  
**Manufacturer:** The Great Outdoor Gym Company

**Risk Level:** L - Low Risk  
**Surface:** Crushed Stone



**Finding:** The paintwork on this item has been damaged or worn exposing the metal underneath which is rusting / corroding

**Action:** Treat affected areas and repaint

**8 - Low Risk (Finding 1)**

**Item:** Outdoor Fitness Equipment - Cycle  
**Manufacturer:** The Great Outdoor Gym Company

**Risk Level:** L - Low Risk  
**Surface:** Crushed Stone



**Finding:** There are obstacles located within the movement space of the item in contravention of the requirements of BS EN 16630

**Action:** Monitor - No remedial work recommended

**9 - Low Risk (Finding 2)**

**Item:** Outdoor Fitness Equipment - Cycle  
**Manufacturer:** The Great Outdoor Gym Company

**Risk Level:** L - Low Risk  
**Surface:** Crushed Stone



**Finding:** There is some damage to the sign

**Action:** Replace



**i** 6 - Low Risk (Finding 3)

**Item:** Outdoor Fitness Equipment - Cycle  
**Manufacturer:** The Great Outdoor Gym Company

**Risk Level:** L - Low Risk  
**Surface:** Crushed Stone



**Finding:** There is some damage to the item

**Action:** Monitor for any further deterioration and repair as required

**i** 9 - Low Risk (Finding 1)

**Item:** Outdoor Fitness Equipment - Leg Press  
**Manufacturer:** The Great Outdoor Gym Company

**Risk Level:** L - Low Risk  
**Surface:** Crushed Stone



**Finding:** There is some damage to the sign

**Action:** Replace

**i** 8 - Low Risk (Finding 2)

**Item:** Outdoor Fitness Equipment - Leg Press  
**Manufacturer:** The Great Outdoor Gym Company

**Risk Level:** L - Low Risk  
**Surface:** Crushed Stone



**Finding:** There are obstacles located within the movement space of the item in contravention of the requirements of BS EN 16630

**Action:** Monitor - No remedial work recommended

**i** 6 - Low Risk (Finding 3)

**Item:** Outdoor Fitness Equipment - Leg Press  
**Manufacturer:** The Great Outdoor Gym Company

**Risk Level:** L - Low Risk  
**Surface:** Crushed Stone



**Finding:** The item has missing component(s)

**Action:** Consider replacing missing components

**i** 8 - Low Risk (Finding 1)

**Item:** Outdoor Fitness Equipment - Dip Station  
**Manufacturer:** The Great Outdoor Gym Company  
**Risk Level:** L - Low Risk  
**Surface:** Crushed Stone



**Finding:** There are projecting bolt thread(s) present  
**Action:** Remove excess thread length and deburr or provide cap

**i** 6 - Low Risk (Finding 2)

**Item:** Outdoor Fitness Equipment - Dip Station  
**Manufacturer:** The Great Outdoor Gym Company  
**Risk Level:** L - Low Risk  
**Surface:** Crushed Stone



**Finding:** The paintwork on this item has been damaged or worn exposing the metal underneath which is rusting / corroding  
**Action:** Treat affected areas and repaint

**i** 8 - Low Risk (Finding 3)

**Item:** Outdoor Fitness Equipment - Dip Station  
**Manufacturer:** The Great Outdoor Gym Company  
**Risk Level:** L - Low Risk  
**Surface:** Crushed Stone



**Finding:** There are obstacles located within the movement space of the item in contravention of the requirements of BS EN 16630  
**Action:** Monitor - No remedial work recommended

**i** 8 - Low Risk (Finding 1)

**Item:** Outdoor Fitness Equipment - Pull Up Station  
**Manufacturer:** The Great Outdoor Gym Company  
**Risk Level:** L - Low Risk  
**Surface:** Crushed Stone



**Finding:** There are obstacles located within the movement space of the item in contravention of the requirements of BS EN 16630  
**Action:** Monitor - No remedial work recommended

**i** 9 - Low Risk (Finding 2)

**Item:** Outdoor Fitness Equipment - Pull Up Station  
**Manufacturer:** The Great Outdoor Gym Company

**Risk Level:** L - Low Risk  
**Surface:** Crushed Stone



**Finding:** The sign is missing and sharp edges are present **Action:** Replace sign