

Dear Neighbour,

Welcome to a new edition of the A140 Long Stratton Bypass Project newsletter. We are always happy to hear from you or receive any feedback or ideas to improve our project communications and newsletters. Please see our details at the end of the newsletter to contact the project team.



### Project Milestones

#### Church Lane Footbridge

At the north of the scheme, work has been progressing on the structural work required for the new overbridge that will carry pedestrians over the bypass carriageway. The route across the footbridge once complete will connect the existing Public Right of Way 'FP 7' that leads out of Fairfield Close to Stratton Lane and to 'FP 6' that leads to Church Lane.

The steel span of the footbridge is 42 metres long in total and safely arrived at site on Monday 10<sup>th</sup> March. The steel span was transported by road under a police escort from the Nusteel Structures fabrication facility.

After arriving to site in two sections weighing approximately 45 tonnes each, a 500t mobile crane was used to lift the bridge sections onto steel pallets that are designed to support the spans and stop them from moving whilst the two sections of the span are welded together.

Once the welding is complete, a bigger 750t mobile crane will be used to lift the span into place on top of the reinforced concrete abutments.

The images adjacent show the 500t crane, reinforced concrete abutments and wing walls of the footbridge that the bypass carriageway will pass below.



Credit: Drone Vision Norfolk



### Project Milestones

After a successful installation of the bridge span, the following activities will take place for the side approaches on the east and west of the bridge:

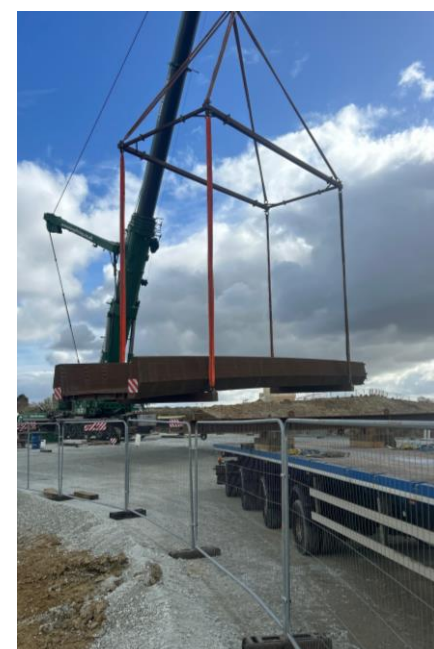
- Footway works and edgings
- Pavement works
- Installation of steps, safety barriers and handrails
- Tie-ins to surrounding paths and carriageways
- Landscaping



Credit: Drone Vision Norfolk



Credit: Drone Vision Norfolk







## Project Milestones



Hall Lane Road Bridge

At Hall Lane, the 8 reinforced concrete columns that provide the structural support for the bridge deck have now been surrounded by material, constructing reinforced earth embankments that are built up to the required height of the bridge abutments.

In the coming weeks, a 300t crane will arrive to site in preparation for lifting the 10 pre-cast concrete beams on top of the structure. A working platform to accommodate for the loads produced by the 300T crane and beams has also been constructed in recent weeks. Once the beams are landed in place, works to pour the concrete for the reinforced bridge deck, waterproofing and wall drainage will commence.



Landscaping in progress

### Earthworks

This month, stabilisation of the carriageway has taken place from Edges Lane heading north towards Church Lane. Environmental bunds are starting to take shape in the south of the scheme and kerbing is being installed to Parkers Lane.

### Drainage

Across the scheme, over 4km of filter drainage has been installed to date.

### Landscaping

Over 3.5km of post-and-wire fencing has been installed to date. Landscaping has commenced across the scheme including to the environmental bunds. We have also started planting hedgerows, trees and wetland plants around drainage ponds.



## Added Value



Since January, we have been supporting a local student from City College Norwich in his 'Design, Surveying and Planning for Construction' T-Level. T-Levels are a two-year course that follow on from GCSEs, providing an alternative to A-Levels and apprenticeships. Over the two-year programme of study, students are required to dedicate 20-30% of their time to practical experience gained with an employer as part of an industry placement.

On the Long Stratton Bypass Project, placements can be tailored to the student's passions and aspirations by spending time in each team on site i.e., Structures, Highways, Environment, Quality and Commercial. This provides insight into many areas of civil engineering projects such as health and safety, understanding and using drawings and different construction methods.



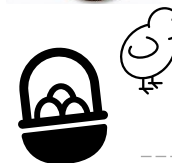
## Community Events

### Easter Event – Save the date!

Saturday 19<sup>th</sup> April  
12pm – 5pm



The Queens Head & The Chip Inn will be hosting an easter event with children's activities, easter egg hunt, tombola, cake & craft stalls. Please contact The Queens Head for more information.



### VE Day '80 years' Event

Saturday 10<sup>th</sup> May  
1pm – 5pm  
Manor Road Playing Field



Long Stratton  
Town Council

Find out more via Long Stratton Town Council's channels of communication.

## Get in contact

If you have any queries or concerns, you can reach the Octavius Infrastructure A140 Long Stratton Bypass Project Team via:  
**Email:** Long.Stratton@octavius.co.uk **Telephone:** 01737 944 831

For design enquiries, contact the Norfolk County Council team:  
**Telephone:** 0344 800 8020 **Email:** longstratton@norfolk.gov.uk  
**Project Website:** www.norfolk.gov.uk/strattonbypass

If you have a general highway enquiry or out-of-hours problem, please report it to the Highway Authority via the online form at: www.norfolk.gov.uk/highwaysproblem or call 0344 800 8020.