

NORFOLK COUNTY COUNCIL proposes to make a Temporary Traffic Regulation Order (STRO10197) affecting the U76129 Edges Lane from its junction with U71606 Hill Farm Road to its junction with U76130 Stratton Lane in the TOWN OF LONG STRATTON to facilitate Norfolk County Council site clearance works for construction of a new road.

The road will be temporarily closed (except for access) from 8<sup>th</sup> January to 29<sup>th</sup> March 2024 for the duration of the works only when signs indicating the closure are in place.

Alternative route is via: U71606 Hill Farm Road, A140 Norwich Road, B1527 Hempnall Road, C201 The Street, U76024 Common Lane, U76025 School Road, U76129 Edges Lane (Morningthorpe and Fritton, Long Stratton).

If necessary, the restriction could run for a maximum period of 18 months from the date of the Order.

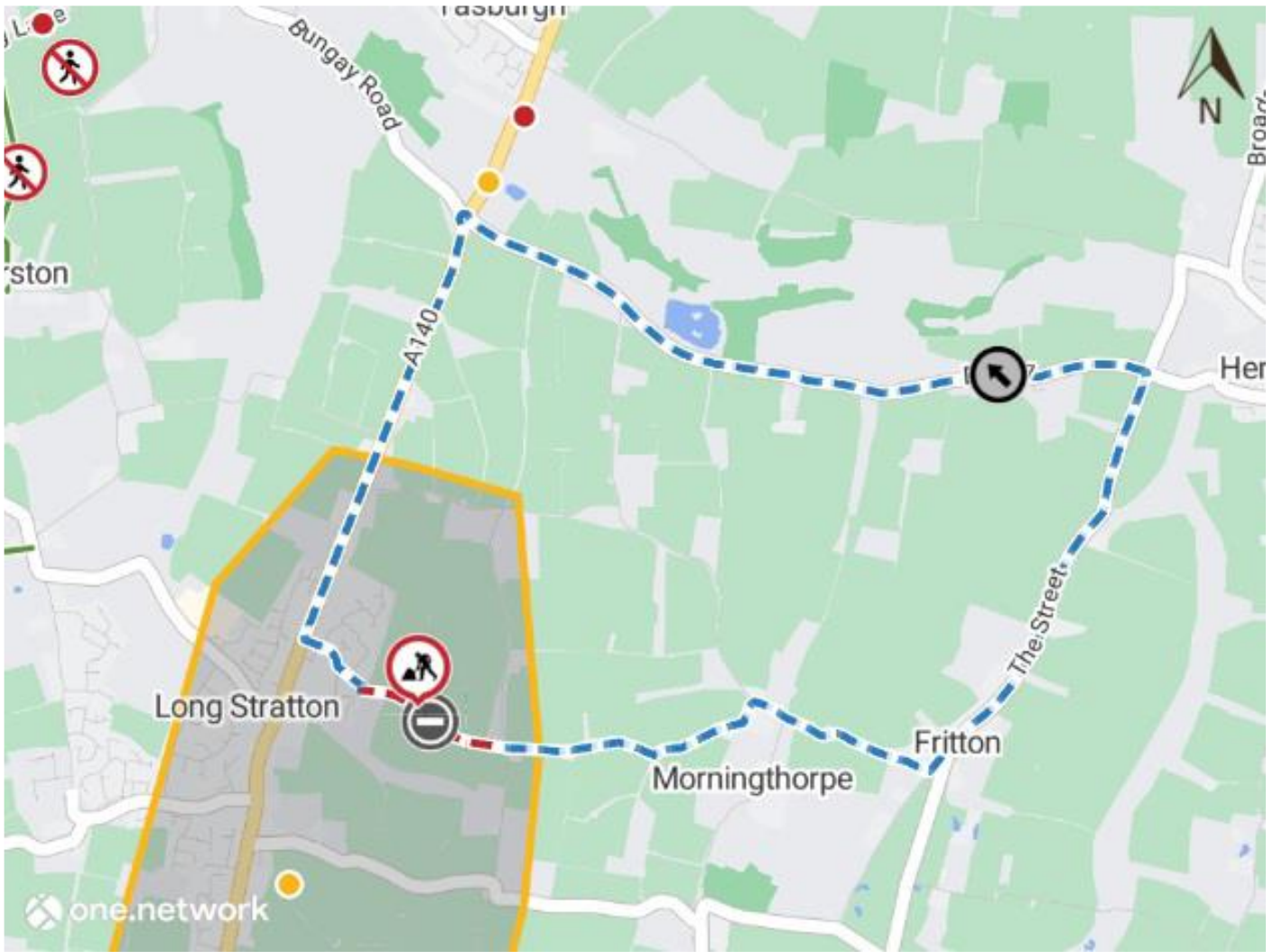
Penalty: £1000 maximum fine on conviction and/or endorsement for contravention.

In the event of the start date being delayed the new start date will be displayed on site in advance.

The team dealing with enquiries at Norfolk County Council is South Area Streetworks (Community and Environmental Services Department) contactable by telephone at 0344 800 8020 or email at [streetworks@norfolk.gov.uk](mailto:streetworks@norfolk.gov.uk). Details are also available at <https://one.network>.

Dated this 29<sup>th</sup> day of December 2023.

Katrina Hulatt  
Director of Legal Services (nplaw)  
County Hall  
Martineau Lane  
Norwich  
NR1 2DH



Map data © MapTiler © OpenStreetMap contributors

